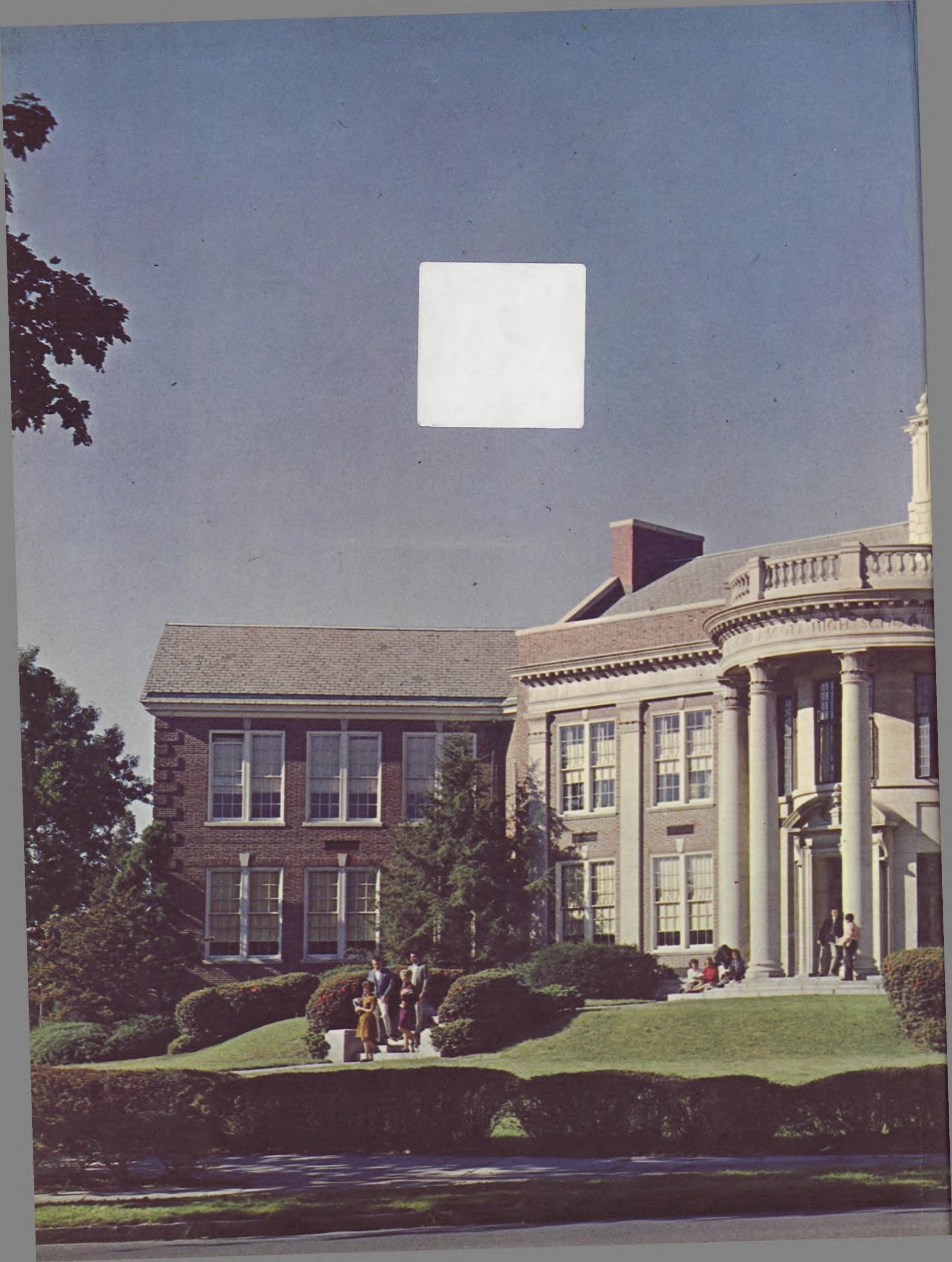


TARTAN

64





The Class of 1964 Presents . . .





THE

TARTAN

1964

PUBLIC LIBRARY
EAST ORANGE, NEW JERSEY

CLIFFORD J. SCOTT HIGH SCHOOL

East Orange, New Jersey

NJ
373
T193
1964



JOHN F. KENNEDY
1917-1963

1964-

I think continually of those who were
 truly great.
 Who, from the womb, remembered the
 soul's history
 Through corridors of light where the
 hours are suns
 Endless and singing. Whose lovely
 ambition
 Was that their lips, still touched
 with fire,
 Should tell of the Spirit clothed from
 head to foot in song.
 Stephen Spender

FACULTY	6
SENIORS	16
CLASSES	48
ORGANIZATIONS	56
SPORTS	84



FACULTY

When we think of Scott High, we think of teachers. Without them there would be no "hours . . . endless and singing." For a school is not made of brick and glass and steel, but of students and teachers and the knowledge they exchange. When we leave Scott after four years of contact with men and women dedicated to sharing their knowledge, we are much larger persons than we were when we entered. They have shown us the corridors of the light of learning. We can never repay them.





ROBERT H. SEITZER
Superintendent
East Orange Public Schools



M. C. SHUTTLESWORTH
Principal
Clifford J. Scott High School



ROBERT J. MILLER
Administrative Assistant

GUIDANCE



CORA B. STEIN
Director of Guidance

WILHELMINA BAECHT



ELROY A. DeMARIA



ENGLISH



ANDREW BOBBY



MARIE A. SELLITTO



GENE R. TOUCHET



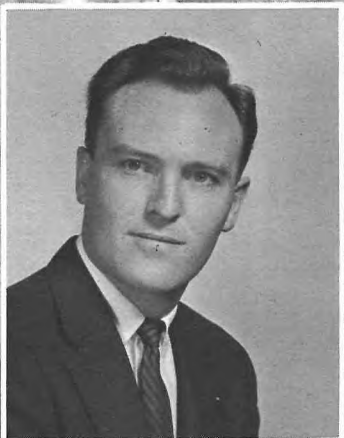
LEONARD HOOPER



EMMELINE A. LINN
Chairman



TULLIA FERRUCCI



ANDREW DOWNIE



ELISABETH RICHARDSON



E. LENORE KUNTZ
Librarian

SOCIAL STUDIES



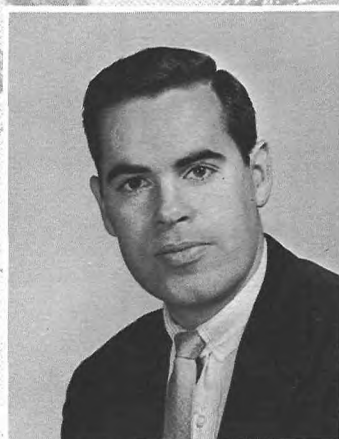
DAVID W. HUTCHINGS



WILLIAM BEST
Chairman



ERWIN SLOAN



JAMES E. POWELL



ERNEST CHAN-NUI

SCIENCE



DAVID H. GRIFFITHS

KENNETH HOFFMAN



PHILIP PERKINS
Chairman



JEREMY F. PERLMUTTER



ARCHIE W. POLLOCK



FRANCIS L. CHUPICK



JOHN P. MAZZUTO

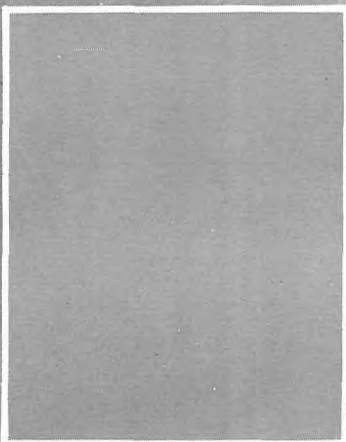


DANIEL H. FIDLOW



DOUGLAS VAN LIEU
Chairman

BUSINESS EDUCATION



NELSON HARTLEY



DONALD J. MAJERSCAK



HOWARD C. TRACY
Chairman



JANET M. BLACK



LORRAINE MARINACCIO

INDUSTRIAL ARTS AND HOME ECONOMICS



GEORGE DORNE



CLINTON H. CLAUS



LEROY A. BOHSEN
Chairman



JUNE L. SMITH



MARION N. SHELLY

ART AND MUSIC

NICHOLAS E. WAGMAN, JR

GILBERT R. HUGHES



C. SCRIPPS BEEBEE



MARY B. GOINES



VERNON R. MILLER

LANGUAGE



EDWARD P. WIZDA
Chairman

EDWARD F. KULAGA



FREDERICK ONIS

ANDRE' TOWNSLEY

HEALTH AND PHYSICAL EDUCATION



HELEN C. WRIGHT



SHIRLEY T. KRUEGER



VICTORIA L. GRENIER

EDMUND LYONS

FRED HILL

WALTER WILLIAMS

JAMES E. PICKEN
Chairman





FLORENCE A. MUSICK



EMILY S. FRANCKE



FLORENCE K. RAMEY



RUTH R. ENGLER

SECRETARIES



CUSTODIANS

Louis J. Vecchione, Chester Ringwald,
Larry Kulp, Art McCleary, Mary Sko-
powski, Charles Mocksfield.

CAFETERIA STAFF

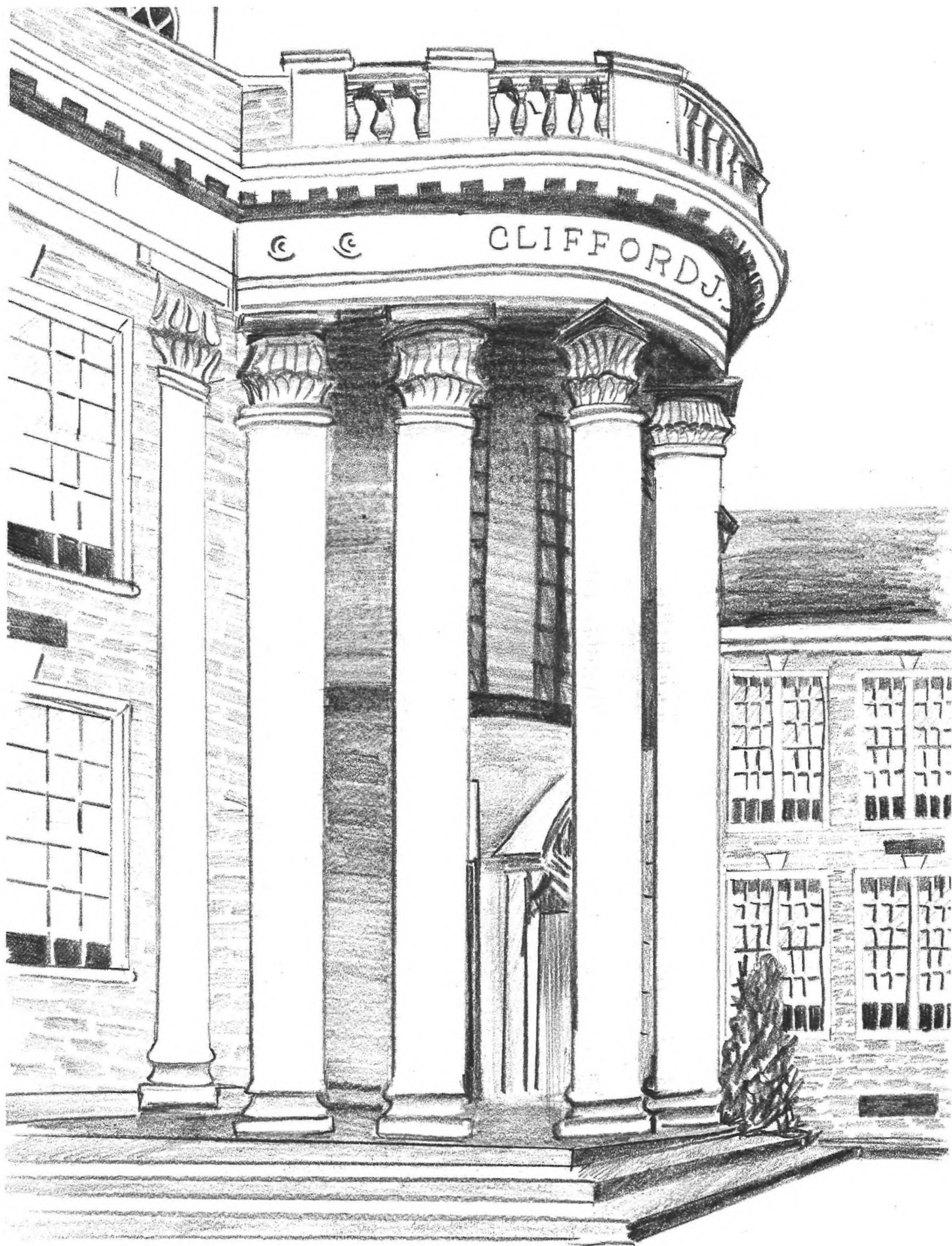


Mrs. Fiore, Mrs. Archimbauld, Mrs.
Fletcher, Mrs. Ort, Mrs. Beehling,
Mrs. Morgan.



SENIORS

For the seniors, study at Scott High is almost past. The future is before us inviting but uncertain. So we cram these last few weeks and months with events, hoping to build up a store of memories with which to face the future. We remember our freshman days when Scott's corridors seemed so large and unending. And now that the long halls have just begun to fit, suddenly they are too small. It is time to go forward — remembering.





SENIOR CLASS ADVISERS

Miss Lorraine Marinaccio and Mr. Andrew Downie.

OBLIGATION 1964 . . .

What does the world expect from the class of 1964? Two things:

First, as individuals to marshal the courage to stand up to the truth of any situation in the face of all adversity; furthermore, to cultivate a curiosity for all areas of human endeavor, a curiosity which a lifetime of energy will not satisfy.

Secondly, as members of society to go beyond self-interest, to make real the ideal of love of neighbor, to accept the challenge made so poignantly relevant on November 22 of your senior year, expanding the word **country** to include the idea **world**, ". . . ask not what your country can do for you — ask what you can do for your country."

As you leave your high school years behind and face the world of tomorrow, remember that we have faith in your abilities to prosper as a person and participate as a citizen. Good luck, good health to the class of 1964 — farewell.

SENIOR CLASS OFFICERS

John DeMado, vice-president; Judi Orlando, secretary; Lester Kaplan, treasurer; Stephen Clem, president.

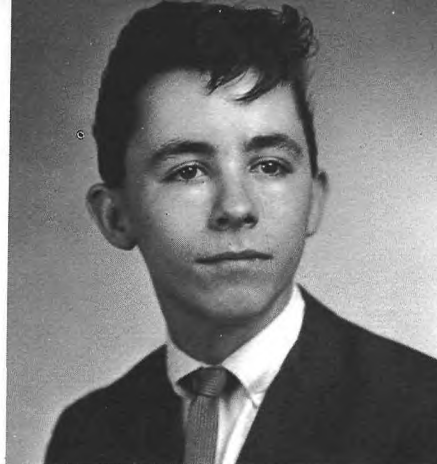




GLORIA ARCARO

"Gloria" Psychologist
Talkative . . . small and energetic
. . . real school spirit . . . loves week-ends . . . busy as a bee.

Basketball 1; Swimming 1,4; Usherette 4; Thistle 4; Tartan Assistant Editor 3, Managing Editor 4; Spanish Club 3, Vice-President 4; Bagpipe Staff 4.



BRIAN ALLEN

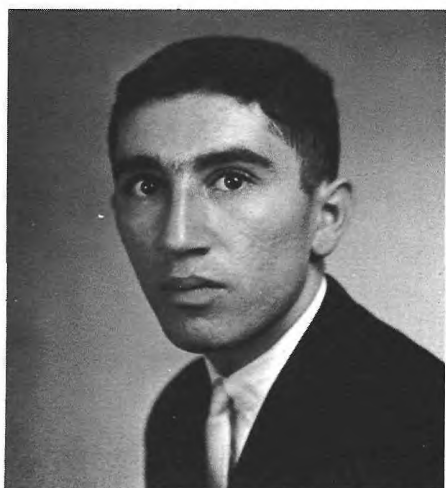
"Bri" Auto-mechanic
Mr. Best's class . . . quick wit . . . always smiling.



ANTHONY ALTIERO

"Tony" Drafting
The Sunoco Station . . . real nice guy
. . . reserved personality . . . subtle humor.

Projection Committee 1; Office Assistant 2,3.



JOSEPH AMIRKHAS

"Joe" College
Abdul . . . his grandmother . . . Chief TSA . . . "Fungus" . . . his tennis ball . . . talented writer.

School play 2,3; Jr. Red Cross 2,3.



LIGIA AQUILAR

"Little Lee" Secretary
Great personality . . . cute little accent . . . Joe's Pizzeria . . . fast cars.
Softball 1; Jr. Red Cross 1,2.



KARIN ABBEY

"Karin" Literature & History
Leadership . . . Hootenanny '63 . . . term paper on Judah P. Benjamin . . . Bagpipe co-editor . . . by line in Newark News.

Basketball 1; Swimming 1; Band 1-4; Bagpipe Staff 1,2, Bagpipe Page Editor 3, Bagpipe Co-Editor 4; I.R.C. 3,4; Library Assistant 3; Medical Assistant 3.

GARY ASPERSCHLAGER
"Gar" Physicist
Good half miler . . . enjoys math and science . . . friendly personality . . . "spelling ability?" . . . nice smile.
Track 1-4; Band 1-4; Tartan Ed. Bd. 4; Calculus Club 3; Audio Crew 3; Astronomy Club 3,4.

ELEANOR BANKOWSKI
"Ellie" Teacher
"Strawberry blond" hair . . . Student Council Executive Board Member . . . fun loving in quiet way.

Softball 1,2; Assembly Committee 3,4; Medical Assistant 2,3; Office Assistant 3,4; Student Council 3,4; French Club 1-4; Pep Club 4; Reception Committee 3.

CLAIRE BARKER
"Tommie" College
Flirty smile . . . studious appearance . . . pixie hair cut . . . Pennsy accent.
Swimming 1; Office Assistant 2,3; Usherette 4; Receptionist 4; Pep Club 4; Fashion Club 3.



CLASS OF 1964



DONNA JEAN BELL

"Donna" Secretary
Carefree manner . . . ping pong champ . . . a flirtatious nature . . . stylish dresser.

Softball 1; Glee Club 1; Citizenship 2; Office Assistant 2,4.



JANET BELLOMO

"Janet" Teaching
Member of stage crew . . . her dark hair . . . friendly . . . football queen attendant.

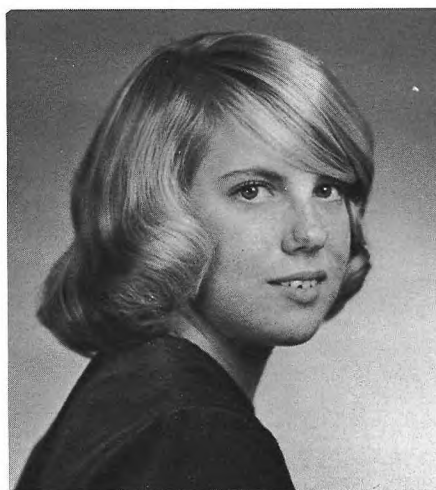
Basketball 2,3; Hockey 3; Softball 2,3; Stage Crew 3,4; Dramatics 3,4; Class Secretary 3.



JENNY BENJAMIN

"Jenny" Secretary
Always laughing . . . soft voice . . . leadership . . . friendly toward others.

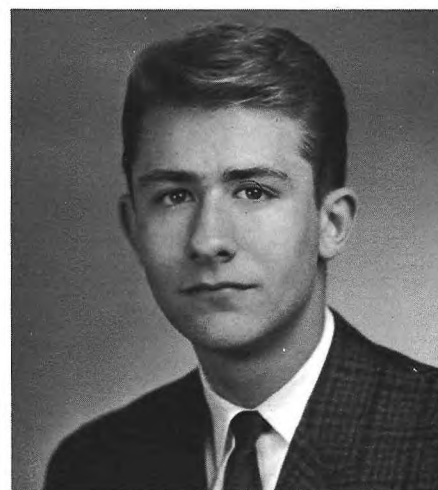
Basketball 2; Volleyball 2; Modern Dance 2,3; Medical Assistant 3; Office Assistant 1-3; Drill Team 2-4; Fashion Club 3.



LINDA BENNETT

"Linda" Teacher
Friendly smile . . . sweet personality . . . that Italian correspondence.

Basketball 1-3; Softball 1; Tartan Staff 4; Modern Dance 1,2,4; Library Ass't. 2; Pep Club 4; French Club 1; Spanish Club, Treas. 3, Sec. 4; Canteen Board 4.



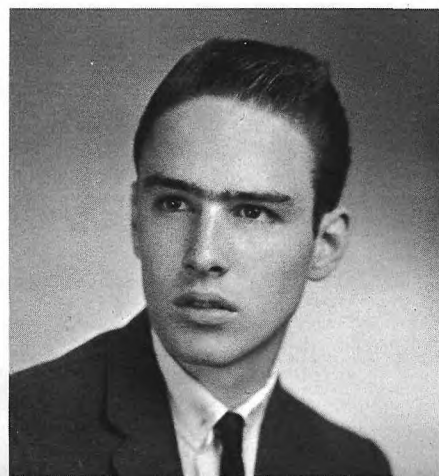
BRANT BENSON

"Brant" College
His expensive neckties . . . boyish grin . . . good time at the Old Clothes Dance . . . his Bonneville.

Baseball 1-4; Band 1,2; Tartan Staff 4; Canteen Board 1; Student Council 3,4.

DAVID CHARLES BEYERLE
"Dave" Electronics Technician
Nice personality . . . fabulous miler . . . handball behind the school . . . great guy.

Track 1,3,4; Tennis 2; Microphone Club 1-4; Projection Club 1-4; Public Address 1-4.

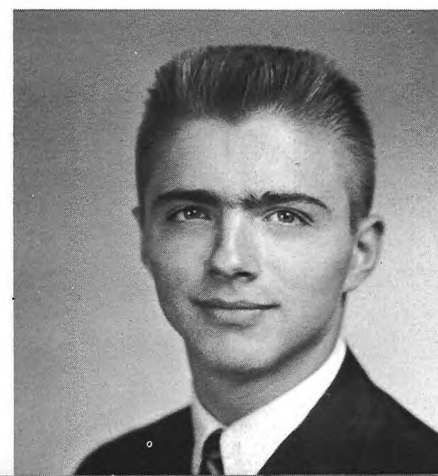


DENNIS BLOMGREN
"Den" College
Sixth period P.A.D. . . . quiet . . . dry sense of humor . . . his car.
Band 1-3.



RONALD BOBUS
"Ronnie" College
His chemistry notebook . . . butterfingers in chem lab . . . good sport . . . always friendly.

Entered '62; Tennis 3; Dance Band 3,4; Band 3,4.





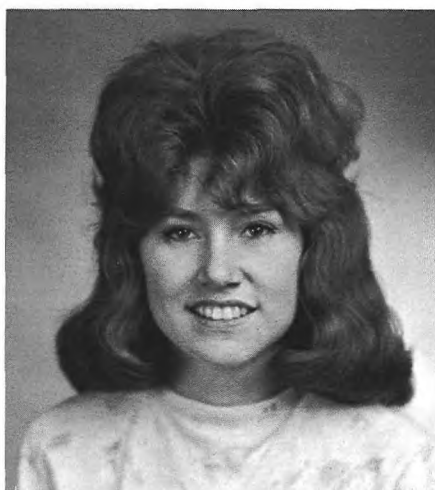
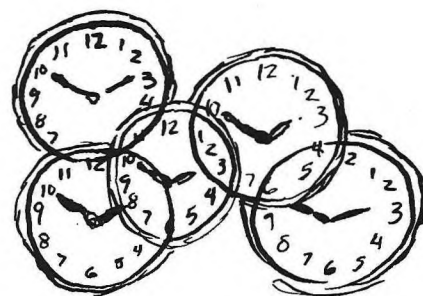
KENNETH R. BOLEN

"Kenny" **Marines**
Lively . . . basketball at Soveral Field . . . "Tamba" . . . lot of fun. Baseball 1-3; Track 4; Soccer 4; Glee Club 1-3; Scottsman 2,3.



LESLIE BROWN

"Les" **College**
Tall . . . great athlete . . . his great big grin . . . the E.C.T. Basketball 1-3; Football 1-4; Track 1-3.



KATHLEEN BRENNAN

"Pebbles" **Beautician**
Long red hair . . . always joking . . . loves "Fords" . . . her own beauty shop . . . personality plus. Softball 1; Glee Club 1,2; Office Assistant 3; Library Assistant 2; Medical Assistant 2; Usherette 4.

PHYLLIS BROWN

"Phyl" **College**
"Philly Brown" . . . quite and sweet . . . her collection of green stamps. Basketball 1,4; Swimming 1; Hockey 1; Softball 3,4; Volleyball 1; Glee Club 1-3; Stage Crew 3; Publication Business Staff 3-4; Fashion Club 3; Modern Dance 1-3; Library Committee 3-4; Audio Crew 3.



KATHLEEN MARGARET BRODBECK

"Kathy" **Airline Stewardess**
Cheerleader . . . cheerful outlook on life . . . hard worker . . . freckles . . . school spirit. Cheerleader 4; Softball 1,2; Tennis 1; Assembly Committee 3,4; Glee Club 1-3; Modern Dance 1,3; Medical Assistant 2; Usherette 4; Student Council 1,3; Executive Board 4; Charm Chorus 2,3; Reception Committee 3; Leaders Club 3; Pep Club 4; Fashion Board 4.

JOHN CAMMARATA

"Luigi" **Teacher**
Quiet . . . nice to know . . . great baseball catcher. Baseball 1-4; Office Assistant 1,2; Supply Committee 1,2.



SUZANNE BOROWY

"Susie" **Nurse**
Flaxen hair . . . her pajama parties . . . always seen with Doris . . . her famous uncle. Basketball 2-4; Swimming 2; Tartan Staff 4; Spanish Club 3; F.N.C. 3,4; Medical Assistant 3; Office Assistant 3; Usherette 4; Attendance Comm. 3; Student Council 4.

BARBARA CAGEN

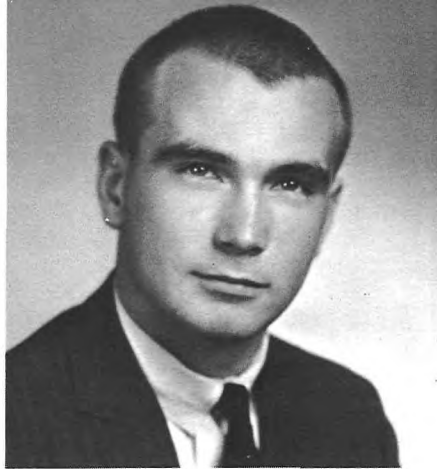
"Barbie" **Theater**
Dramatics . . . Vachel Lindsay's "The Congo" . . . Thistle editor . . . broad Boston accent . . . chantezvous en français? Entered 1962. I.R.C. 3,4; Modern Dance 3; Thistle Staff 3,4; Office Assistant 3; Executive Board 4.





CAMILLE CAPRIGLIONE

"Cam" Secretary
Witty sense of humor . . . ability to get along with others . . . her feeling for others.
Volleyball 3.



STEPHEN CLEM

"Steve" Law
Collegiate dresser . . . his versatile interests in studies, sports, and fun . . . rare combination of sincerity and good looks . . . leadership ability.
Baseball 1-3; **Tartan** Assistant Editor 3, Editor-in-chief 4; Calculus Club 3; Astronomy Club 4; Assembly Committee 3; Jr. Red Cross 1; Class Vice-President 1; Class President 2-4; Student Council 1-4.



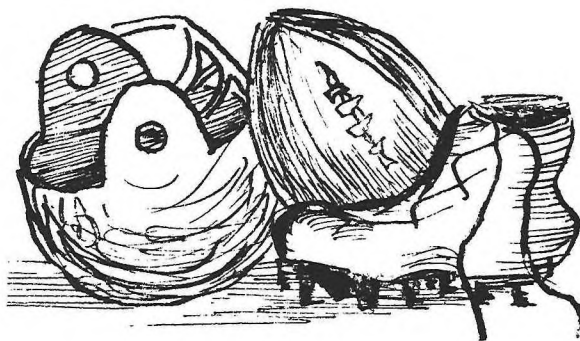
JAN CARSON

"Jan" College
Pleasing personality . . . beautiful smile . . . hard working . . . artistic . . . 7th period English, junior year.
Entered in 1962; **Tartan** Staff 4



FRANCES ARLENE CARTER

"Arlene" Business School
Sense of humor . . . self-reliance . . . one of the best personalities in the senior class.
Basketball 1; Jr. Red Cross 1; Medical Assistant 1; Office Assistant 1-4.



PAUL CECE

"Cece" Navy
His car and the way he drives it . . . blushes easily . . . husky voice . . . likes to crack jokes in history class.
Football 1; Glee Club 1-2; Citizenship Club 2.



ROBERT D. CLARK

"Bob" Air Force
Bounces down the halls . . . always happy . . . his car.



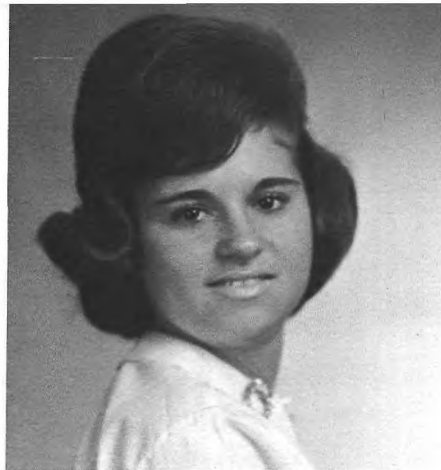
JACK CLARKE

"Jack" College
Exceptional athlete . . . tall and quiet . . . great guy . . . has to be state hurdle champ.
Basketball 1-4; Football 1-4; Track 1-4; Citizenship Club 2.



RONALD CLARKE

"Ronnie" U.S. Army
"Kidd" . . . fine writer . . . great dancer . . . nice personality . . . a lot of fun.
Football 1-4; Track 1-4; Citizenship Club 2.

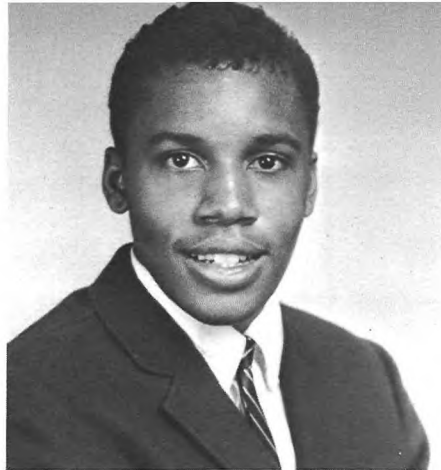


MARIA COLABELLI

"Little Vick" Secretary

Go-power . . . her vivacious laugh . . . fun-loving . . . petite.

Modern Dance 3; Jr. Red Cross 4; Office Assistant 3; Usherette 4; Fashion Club 3.



REGINALD COOKE

"Reggie" College

Quiet . . . soft speaker . . . love for basketball . . . inquisitive . . . nice personality.

Basketball 3; Football 1; Track 1,2; Glee Club 2,4; Spanish Club 3; Jr. Red Cross 1; Flag Committee 4; Astronomy Club 4.



SHIRLEY ISABELLA CORBY

"Liz" Dietician

Selling Christmas cards for the senior class . . . petiteness plus . . . Señor's homeroom.

Drill Team 1-4; Library Assistant 4.



CAROLE CORIDDI

"Carole" Business

Tiny stature . . . "Peanuts" . . . big brown eyes . . . "Coridds"

Basketball 1; Softball 1; Glee Club 1; Medical Assistant 1,2; Office Assistant 1; Usherettes 4; Pep Club 4.

LINDA COVELLO

"Linda" "Covel" Nurse

Twirling ability . . . laughter . . . many activities . . . always ready to lend a helping hand.

Basketball 1,2; Softball 1,2; Volleyball 1; Twirler 2-4; Glee Club 1-3; F.N.C. 1-3; President 4; Fashion Board 4; Jr. Red Cross 1,2; Medical Assistant 2-4; Office Assistant 3; Usherette 4; Student Council 3; Pep Club 4.

CLASS OF 1964



DIANA CORIDDI

"Coridds" X-Ray Technician

Style of clothes . . . hair styles . . . all around personality . . . crazy laugh . . . birthday gift . . . two permits.

Glee Club 1,2; Tartan Staff 4; Jr. Red Cross 2-4; Medical Assistant; Office Assistant 1,2; Student Council 1,2.

PAUL D'ADDARIO

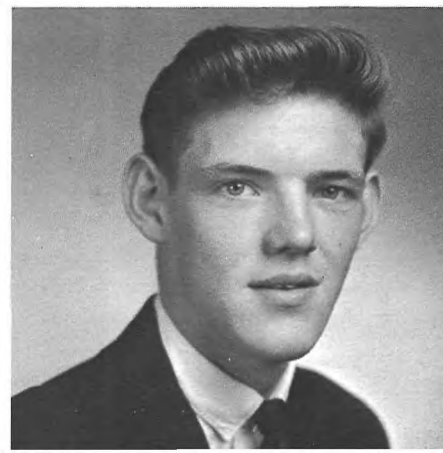
"Paul" Business

Fun-loving . . . carefree . . . P.A.D. unit on democracy.

JOHN WALTER DALY

"Jack" I.B.M. Programmer

Nice smile . . . Chemistry lab periods . . . new at Scott. Entered 1963.





JULIA DE BACCO

"Julie" Secretary
Dancing ability . . . most talkative
. . . after school with Miss Black . . .
Orchestrans dance group.
Drill Team 2,3; Modern Dance 1-4;
Jr. Red Cross 4; Office Asst. 3; Usher-
ettes 4.



MARIA DE FREITAS

"Porky" Clerical Typist
After school with Miss Black . . . long
black hair . . . waiting in the lunch line.
Basketball 3.



ANNA MARIE DELISE

"Annie" Court Stenographer
Takes life as it comes . . . easy going
. . . great personality.
Basketball 1; Modern Dance 2; Li-
brary Assistant 4; Office Assistant 4;
Fashion Club 3.



BRENDA DELUCA

"Bren" Medical Secretary
Her friends in the junior class . . . her
speedy (?) Plymouth . . . trips to New
York.
Basketball 1; Softball 1; Modern
Dance 4; Canteen Board 2-4; Recep-
tion Committee 3; Medical Assistant
2; Office Assistant 2,4; Pep Club 4; Stu-
dent Council 1-4; French Club 1,2;
Spanish Club 4.



JOHN JOSEPH DE MADO

"Jack" French teacher
His cartoons for the **Bagpipe** . . .
the "Tasmanian Devil" . . . his droll
sense of humor . . . his nervousness be-
fore tests.
Football 1; Soccer 4; Band 1-4;
Dance Band 1-4; Publications Business
Staff 3; **Tartan** Editorial Board 4; **Bag-**
pipe Staff 2-4; French Club 3-4; Dra-
matic Club 3; Student Council 1; Class
Vice President 4.



DIANE DEMIRO

"Diane" Teacher
Her long black hair . . . her twirling
ability . . . the Glenridge parties.
Basketball 1; Modern Dance 1,4; Jun-
ior Red Cross 1; Usherette 4; Student
Council 2-4; French Club 1; Twirler 2-4;
Canteen Board 2-4; Spanish Club 3,4;
Pep Club 4.

JAMES R. DENNIS
"Jim" Business Adm.
Serene . . . nice to know . . . a
friend to all . . . his friend "Alan."
Stage Crew 1; Visual Aids 1-3.

DONA C. DE VINE
"Donna" Legal Secretary
Lively laughter . . . her charm brace-
let . . . never a dull moment with her
mischievous nature.
Basketball 2; Modern Dance 1-3;
Senior Cabinet 4; Office Assistant 4;
Usherettes 4; Student Council 1; Fashion
Club 3.



**CLASS
OF
1964**



JOEL C. DiTROLLO

"Carmen" College
Latin lover . . . big Star Chief . . .
the Hustler . . . Clyde Tish and the "R"
party . . . a great guy.

Football 1; Track 1; Tartan Editorial
Board 4.



DAVID LEWIS DODD

"Dave" Auto Mechanic
Quiet personality . . . his car . . .
backroads of New York State . . . easy
to get along with.

Band 1,2; Jr. Red Cross 1-4.



IRENE DOMBECK

"Irene" Secretary
Dancing ability . . . knows how to
have fun . . . shining black hair and
fetching smile.

Basketball 1-3; Hockey 1,3; Softball
1-3; Volleyball 1-3; Library Assistant
1; Office Assistant 1-3; Fashion Club 3.



SUSAN DOMENICK

"Sue" Teacher
Football queen . . . a friend to all
. . . beautiful clothes . . . Student Coun-
cil Secretary.

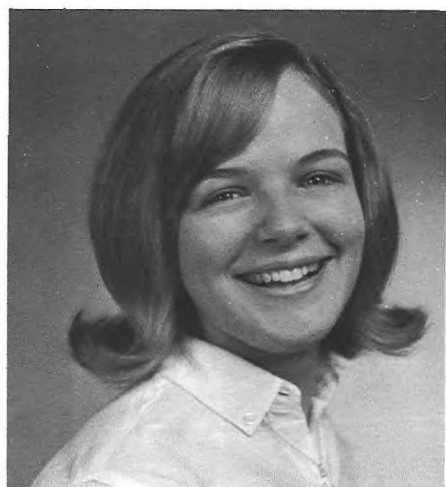
Glee Club 1-3; Bagpipe Staff 2; Bag-
pipe Editorial Board 3,4; Jr. Red Cross
1-4; Usherette Committee 4; Class Sec-
retary 2; Student Council 3; Secretary
4; French Club 2-4; Canteen Board 2-4;
Pep Club 4.



JOANNE DOYLE

"Joanne" Secretary
Beautiful hair styles . . . cute smile
. . . typing ability . . . sophisticated
with freckles.

Glee Club 3,4; Modern Dance 3;
Medical Projection 3,4; Usherette 4;
Pep Club 3,4.



BETSY EISMEIER

"Betsy" Psychologist
Twirling captain . . . petite and
pretty . . . love for St. Benedict's . . .
one of the faithful three.

Twirler 1-3; Captain 4; Glee Club 1;
Softball 1; Reception Committee 2,3;
Junior Red Cross 1,2; Medical Assist-
ant 2; Office Assistant 3,4; Class Treas-
urer 3; Student Council 4; Spanish Club
4; Secretary 3; Canteen Board 3; Sec-
retary 4; Pep Club 4.



JOHN EARLE

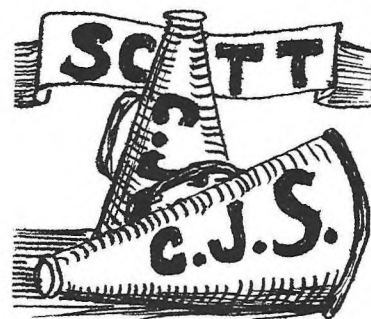
"John" Business
Quiet . . . nice to be with . . . his
clarinet . . . fun in the band.
Jr. Red Cross 1-4.

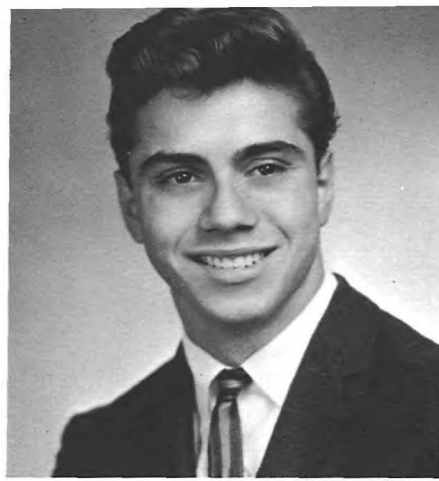
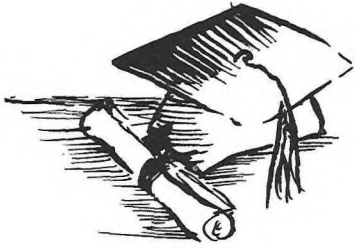


THERESA DURANTE

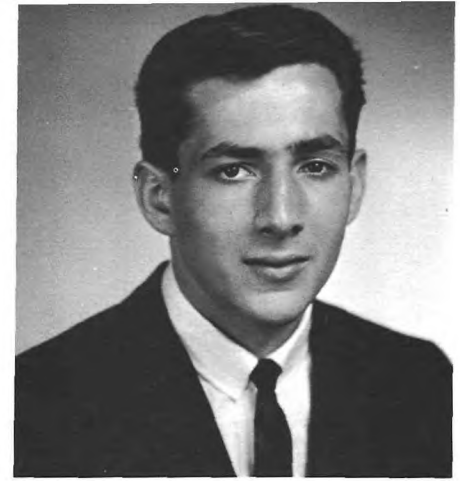
"Terry" Nurse
Long dark hair . . . good natured
. . . soft voice.

Basketball 3; Softball 1,2; Glee Club
1,2; Modern Dance 2; Library Assistant
3; Office Assistant 3; Usherette 4.





GEORGE EUGENE
"Greek" **Business**
 His white Bonneville convertible . . .
 scatback on football team . . . a handy
 comb for that glossy dark hair . . .
"Rocky."
 Football 3,4; Glee Club 3,4.



ROBERT E. FLAHERTY
"Bob" **Architect**
"Flar" . . . a "head" on the soccer
 field and ahead in the classroom . . .
 suave manner . . . driving determina-
 tion . . . bound to succeed.
 Baseball 1-4; Basketball 2,3; Soccer
 1-4; Stage Crew 3; Band 1,2; Tartan
 Staff 3; Dance Band 1,2; Spanish Club
 3,4; Flag Committee 4; Class Treasurer
 2; Class Vice-President 3; Student
 Council 1-4; Pep Club 4; Canteen
 Board 2,4.



PHYLLIS FARANO
"Phyllis" **Beautician**
 Friendly . . . attractive . . . nice
 personality . . . heels on Friday.
 Leaders' Club 3,4; Office Assistant
 1,2; Usherette 4; Student Council 1,2.



KENNETH FINERAN
"Kenny" **College**
 Eagle Scout . . . freckles . . . sparks
 a bit of comedy in every class.
 Tennis 1,3; Bagpipe Staff 1; Office
 Ass't. 3; Student Council 1.

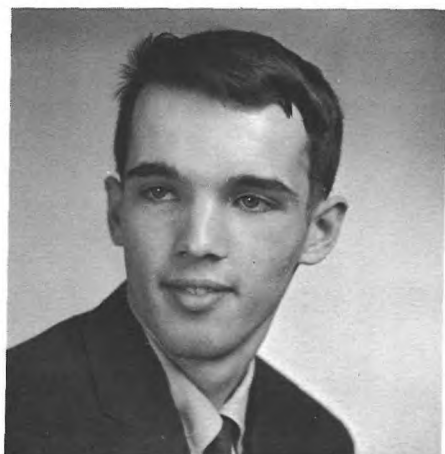


CAMILLE FACCIPONTE
"Camille" **Secretary**
 Fun to be with . . . her love for gym
 class . . . dark hair and eyes.
 Glee Club 1,3; Tartan Staff 4; Fu-
 ture Nurses Club 4; Usherettes 4.

LUCILLE FOX
"Lou" **Business World**
 Vivacious and bubbling personality
 . . . cute smile for everyone . . . dim-
 ples . . . pretty eyes.
 Modern Dance 2; Citizenship Club 2;
 Library Ass't. 2,4; Office Ass't. 2.

OWEN GALLAGHER
"Owen" **College**
 A slide rule always in hand . . . his
 camera work . . . Physics . . . argu-
 mentative.
 Audio Crew 1; Bagpipe Staff 2-4;
 Thistle Staff 3; Photography Club 2,3;
 Jr. Red Cross 1; I.R.C. 2,3; Correspond-
 ing Secretary 4; Debate Club 4.

JUDITH A. GARLICK
"Jude" **Business**
 Bubbling personality . . . the parties
 at Joel's house . . . Saxon Falls in the
 summer.
 Tartan Staff 4; Modern Dance 1-3;
 Usherettes 4; Fashion Club 3.



CLASS OF 1964



GENEVIEVE GERARDO

"Genny" Psychologist

Always smiling . . . pleasant to all . . . all those clean gym suits.

Glee Club 1-4; Bagpipe Staff 1; Modern Dance 1,2,4; Charm Chorus 3,4; Jr. Red Cross Council 1-4; Office Assistant 4; Student Council 2; French Club 1; Drill Team 2,3; Spanish Club 4.

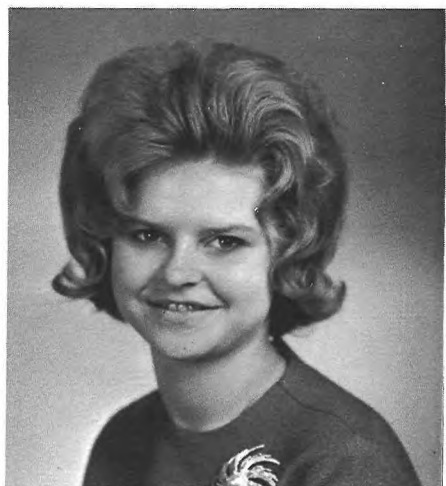


ADELAIDE GOMES

"Addie" Secretary

Sweet personality . . . curly hair . . . hard worker . . . good listener . . . her pretty shade of green.

Basketball 1; Modern Dance 1; Jr. Red Cross 4; Medical Assistant 2; Office Assistant 1-3; Usherette 4.



RUTH GRAYBUSH

"Ruthie" Secretary

Glowing smile . . . poise . . . sweet manner . . . low speaking voice.

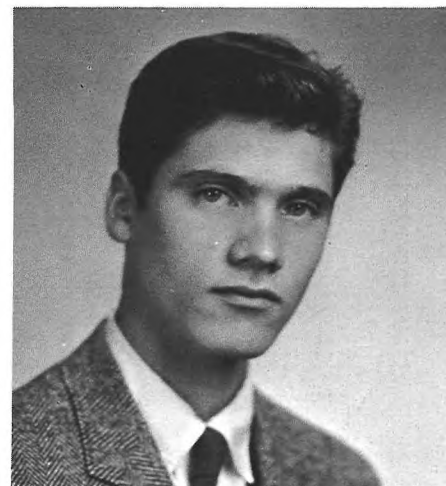
Softball 1; Library Ass't. 2; Medical Assistant 2; Office Assistant 1,2; Modern Dance 1.



JOHN GREGORY

"John" Auto-mechanic

Accident prone . . . wavy black hair . . . R Party with Danny . . . his love for parties.



ALAN GUETTEL

"Gooch" History Teacher

Intelligent . . . dreamy eyes . . . reserved . . . soccer player . . . those summers at Mt. Tremper.

Track 2; Soccer 2-4; Band 2; Glee Club 1,2; Dramatic Club 3; Publications Staff 3,4; Bagpipe Staff 3,4; I.R.C. 3.

FREDERICK HAAS

"Ricky" College

His soccer ability . . . "The strong silent type?" . . . Mr. Parliamentary Procedure . . . TSA poster.

Baseball 1-4; Soccer 3,4; Co-capt. 4; Student Council Exec. Bd. 4; Pep Club 4; Fields and Grounds Committee 4.

RICHARD HARDING

"Rich" Actor

A real bug on dramatics . . . nice guy to know . . . loves to sing . . . summer dramatic courses.

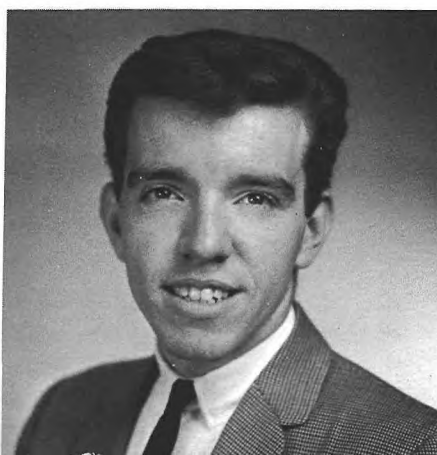
Dramatic Club 1-3, President 4; Stage Crew 3,4; Bagpipe Staff 1; Supply Committee 1; Student Council 1,4; Glee Club 2,3.

LISETTE HARRIS

"Sissie" Business World or Designer

Cheerleading ability . . . intelligence . . . friendly personality . . . pretty clothes.

Cheerleader 3, Capt. 4; Modern Dance 1-4; Office Assistant 1,2; Student Council 1,2.

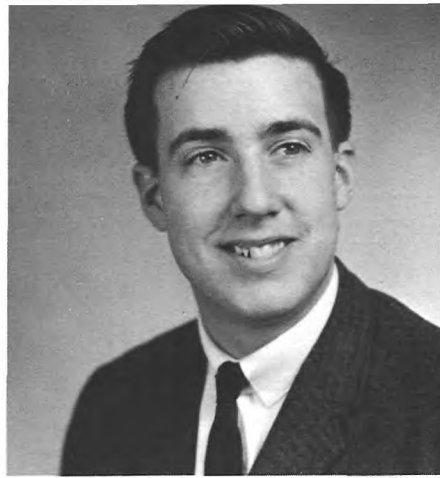




JOSEPH HAVERICK

"Joe"

"Joe javelin" . . . clerical practice . . . the Mexican . . . always calm.
Track 2-4; Soccer 2-4; Citizenship Club 2; Cafeteria Committee.



WILLIAM HELLMAN

"Big Bill"

Mechanic

Sense of humor . . . working the big printing press . . . "51" Chevy with truck engine . . . his bicycle.
Band 1-3.



DAVID FONG HO

"Dave"

Engineer

Affable . . . humorous . . . soccer star . . . "Tsa" . . . All State Chorus . . . "Thus it is so."
Glee Club 1-4; Soccer 2-4; Jr. Red Cross 3; Ushers 3; Student Council Executive Board 4; Modern Dance 3; Scottsmen 2-4.

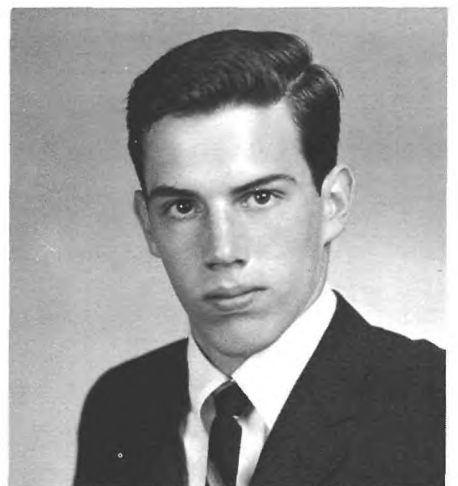


BRUCE HOLDEN

"Bruce"

Armed Forces

Love of cars . . . nights at the library . . . that long walk to school . . . hit with the girls.
Stage Crew 2.



BRUCE HOPPE

"Bruce"

College

"Juicy" . . . soccer agility . . . Saturday night Canteens.
Soccer 2-4; Calculus Club 3; Dramatic Club 1.

CLASS OF 1964

GREGORY HSU

"Greg"

Nuclear Physicist

Math ability . . . I.R.C. . . . sense of humor . . . his miniature deck of cards.
Spanish Club 1-4; Chess Club 1-4; I.R.C. 1,2, President 3,4; Red Cross 1,2, President 3,4; Student Council 3; Executive Board 4.

CHARLES HUGHES

"Chuck"

Accountant

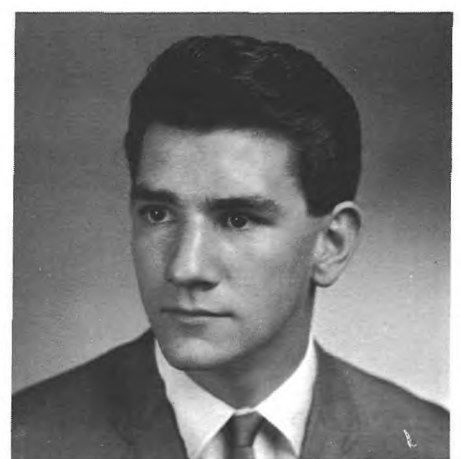
Tall and blond . . . the playroom . . . his Bonneville . . . "Okay, Flash" . . . P.A.D. library and the magic-marker.

MICHAEL ANTHONY HUGHES

"Mike"

Business

Dark, good-looks . . . his "accidents" . . . co-owner of the playroom . . . his beautiful smile.





RICHARD INNES

"Dick" Accountant
Chevy Impala . . . big blue eyes
. . . Student Council representative.
Tennis 1; I.R.C. 2-4; Tartan Staff 4;
French Club 3; Office Assistant 2;
Student Council 4; Audio Crew 1-4.



JOHN JACOB

"John" College
His Spider . . . known for having
fun . . . rugged personality.
Entered 1963; Football 4; Track 4.



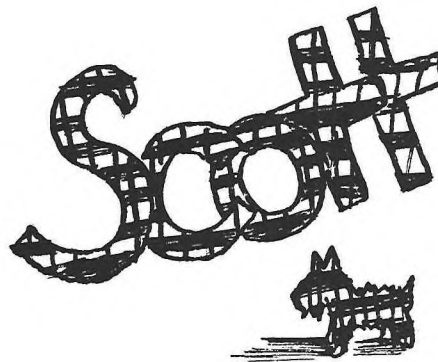
ROBERT JAMES

"Bob" College
His Chevy convertible . . . always
with Walter Turner . . . desserts from
lunch . . . Mrs. Honeycup!
Football 1; Glee Club 1-3.



JOHN JENSEN

"Ken" College
Unassuming smile . . . "Fungus!" . . .
his pal Joey . . . vivid sense of humor.
Spanish Club 4; Student Council 4.



JAMES JENNINGS

"Jim" Undecided
Good friends with Mr. Miller . . .
his sudden bursts of humor in class
. . . his curly brown hair.
Stage Crew 1,2; Rifle Club 4; Cafe-
teria. Comm. 4; Office Assistant 1-3;
Audio Crew 2.

RICHARD JOHNSON
"Dick" College
His short, blond hair . . . quiet . . .
Spanish wizard . . . cute smile.
Track 3.

JACQUELYN ELAINE JOHNSON
"Jackie" Dental Assistant
Sparkling personality . . . cute ac-
tions . . . couldn't be nicer . . . glad
she came to Scott.
Glee Club 3,4; Charm Chorus 4.

ROBERT JOHNSON
"Bobby" Marines
Quiet fellow . . . compact and
powerful . . . welcome addition from
Orange . . . nice guy to know.
Football 3; Track 2,3; Cafeteria
Committee 4.





PETER JORDAN

"Pete" Dentist
 Musician . . . quiet . . . loves pizza
 . . . outdoorsman . . . nice guy.
 Track 4; Soccer 2; Band 1-4; **Bagpipe**
 3; Rock Club 4; Photography Club 3;
 Rifle Club 4; Office Asst. 2,3.



LESTER KAPLAN

"Les" Law
 Sophisticated . . . composed . . . en-
 joys writing . . . says what he thinks.
 Dramatics 1; Audio Crew 1; **Bag-**
pipe Staff 3,4; Cafeteria Comm. 1,2,
 3,4; Jr. Red Cross 2,3; F.P.C. 1,2,3,
 President 4; Senior Class Treasurer;
 I.R.C. 2,3,4.



THOMAS KEATING

"Tom" Physical Education Instructor
 Tall, dark and good looking . . . cute
 laugh . . . his girl friends . . . adven-
 tures in Hillside.
 Baseball 1-4; Football 1,3; Flag Com-
 mittee 4; Citizenship Club 2.



BARBARA KEYSER

"Barb" Anesthesiologist
 Quiet . . . short blond hair . . . ac-
 tive . . . band recitals . . . psychology
 bug.
 Basketball 2; Tennis 1; Volleyball 1;
 Swimming 1; Band 1-4; **Tartan** Staff 4;
 Future Nurses Club 4.



JANET KICHLINE

"Janet" Elementary Teacher
 Red hair . . . brown eyes . . .
 friendly nature . . . pleasant smile
 . . . always ready to help others.
 Basketball 1; Tennis 1; Volleyball 1;
 Glee Club 1-4; Charm Chorus 3,4;
 Fashion Club 3; Modern Dance 1;
 Usherette 4.



ROBERT KNAPP

"Bob" Business
 His very own cheer . . . shy grin . . .
 learning to drive that station wagon
 . . . social dancing in gym . . . good
 sport . . . easy going.

ROSEMARY KOVACH
 "Rosemary" Medical Secretary
 Friendly . . . ambling walk . . . long
 finger nails . . . talkative.
 Drill Team 2,4.



ROBERT LARDIERI
 "Bob" Vocational School
 His car . . . Father's delicatessen
 . . . never complains . . . black hair
 . . . always says "hello" to his friends.
 Tennis 1.



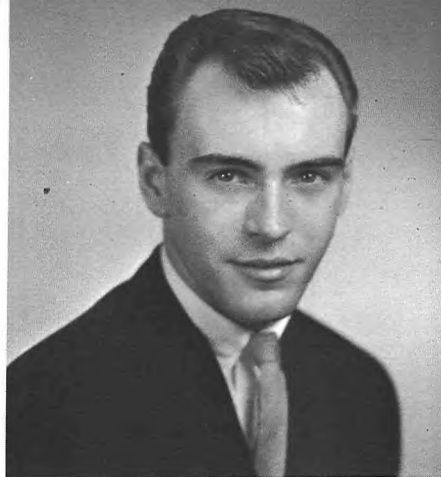


ANTONIA LOFFREDO

"Bobo Newton" Dietician

Shiny black hair . . . her laugh . . . Willie Moon . . . Toni . . . always talking . . . those walks to school.

Basketball 1-3; Softball 1,3; Volleyball 1,2; **Tartan** Staff 4; Pep Club 4; Medical Assistant 2; Usherettes 4.



ROLAND LAWTON

"Lawtz" College

Quick six, stick Chevy . . . ready smile . . . many sweaters . . . sharp personality.

Football 1; Track 3; Stage Crew 2; Student Council 4; Pep Club 4.



DONNA LAYNE

"Donna" Undecided

Bandroom . . . petite . . . wonderful driver . . . sweet personality.

Modern Dance 1; Band 1-4.

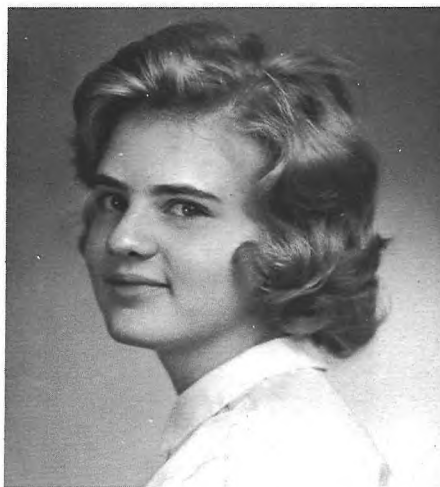


DARIEN LIANG

"Darien" Mathematician or Scientist

Giggling . . . busy . . . sincere . . . eager to learn . . . friendly . . . Hootenanny . . . math IBM.

Tennis 1; **Tartan** Staff 4; Library Assistant 1,2; Jr. Red Cross 1; Medical Assistant 2; Calculus Club 3; Future Physicians Club 2,3; Vice President 4; I.R.C. 3,4; Science Club 3; Astronomy Club 4; Debate Club 4.

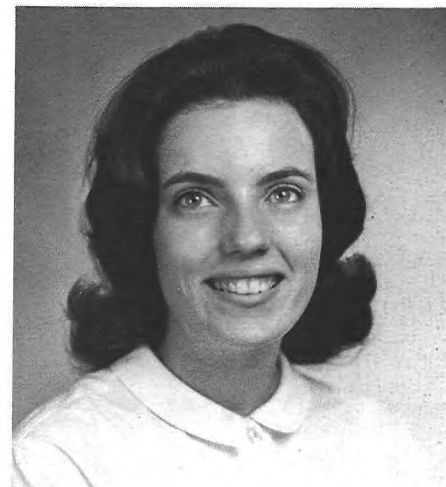


SANDRA LIPPINCOTT

"Sandy" Christian Worker

Forever growing . . . busy, busy . . . floppy blond hair . . . constantly getting lost.

Tennis 1; Glee Club 1-3; Charm Chorus 1-3; **Tartan** Staff 4.



LINDA LAWRENCE

"Linda" Teacher

Poise . . . elegance . . . enjoys the piano . . . outstanding soprano voice . . . Executive Board . . . Allstate Chorus.

Swimming 1; Volleyball 1; Glee Club 1-4; Charm Chorus 2-4; **Bagpipe** Staff 1-3; Modern Dance 1,3; Assembly Committee 4; Pep Club 4; Jr. Red Cross 1,2,4; Office Assistant 1-4; Class Attendance 2,3; Fashion Board 4; Student Council Executive Board 4.



JAMES LOPUCHOVSKY

"Arpie" College, Sports

Good soccer player . . . his light blonde hair . . . his Hungarian accent. Soccer 2-4.



CLAUDIA LYNN

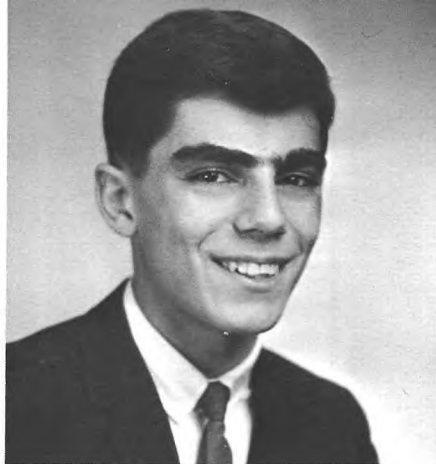
"Corky" Business School

Quiet personality . . . sewing ability . . . clothes . . . cute walk.

Basketball 1,2; Junior Red Cross 1-4; Medical Assistant 4; Usherette 4; Future Nurses Club 4.

**CLASS
OF
1964**

CLASS OF 1964



ROBERT MARCHITELLO
"Moochie" College
 Nice dresser . . . dancing ability
 . . . good looks . . . cute smile.
 Microphone Club 2; Cafeteria Com-
 mittee 4; Office Assistant 2.



RALPH EDWARD MARTIN
"Rrralph" Office Work
 Unassuming . . . projectionist for
 Mr. Best . . . a lot of fun . . . a friend
 to all.
 Tennis 3; Stage Crew 2-4; Dramatic
 Club 2-4; Astronomy Club 2; Cafeteria
 Comm. 2,3.



JANIS MARTIN
"Janis" Business
 Dancing ability . . . petiteness . . .
 high school romance . . . graceful man-
 ner . . . cute smile . . . sweet voice.
 Citizenship Club 2; Modern Dance
 1-4; Usherette 4; Student Council 4;
 Pep Club 4.



DONNA MASCO
"Donna" Secretary
 Jovial personality . . . her A.N. fan
 club . . . her funny jokes.

JOHN McBRIDE
"Pete" U.S. Air Force
 Easy going . . . sense of humor . . .
 trumpet . . . track . . . his short com-
 positions.
 Baseball 2; Track 2-4; Stage 2-4;
 Visual Aids 2-4.

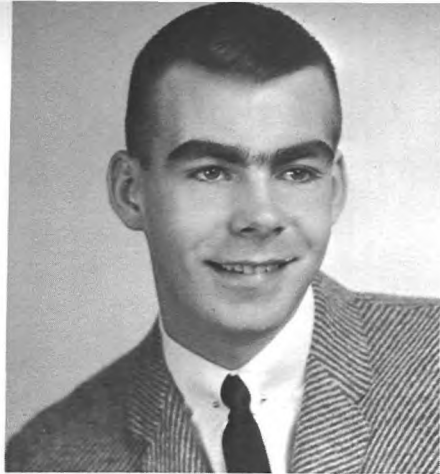


GLENN L. McCROSKERY
"Glenn" College
 Quiet . . . easy to get along with
 . . . warm and agreeable personality
 . . . that "big 8" Buick Special.
 Tennis 3,4; Spanish Club 3,4; I.R.C.
 3; Cafeteria Committee 4; F.P.C. 1.



THOMAS McLAUGHLIN
"Tommy" College
 Jolly good fellow . . . our man from
 Immaculate . . . his 7th period naps
 . . . his willingness to get into mischief.
 Football 4; Office Assistant 3.





ROBERT MECHLER

"Gunner"

College

Eyebrows . . . Student Council 'Pres.'
 . . . Great big 'hi' . . . executive look
 . . . glasses.

Audio Crew 1,2; Cafeteria; Devotional Exer. 4; Student Council 4, President; Pep Club 4, President.



DIANE MEIKLE

"Morty"

Secretary

Quiet . . . friendly disposition . . .
 cute smile . . . ability in business
 courses.

Basketball 1; Softball 1; Glee Club 1;
 Medical Assistant 1,3.



PATRICIA MERCER

"Patty-Poo"

College

Nice clothes . . . her interest in other's
 problems . . . tall and sophisticated . . .
 Puerto Rico.

Basketball 2,4; Volleyball 2,3; Office
 Asst. 3,4; Canteen Board 3,4; Pep Club
 4.



GAIL MERLINO

"Gail"

Secretary

"Little one" . . . her giggle . . . dramatic
 hairstyles and good looks . . .
 giant brown eyes.

Citizenship Club 2; Glee Club 1,2.



MARILYN METRO

"Mar"

Teacher

Poise and sophistication . . . dressed
 in latest style . . . always smiling . . .
 modern dance.

Tennis 1; Glee Club 3,4; Dramatic
 Club 2,3; Bagpipe 2,3; Modern Dance
 1-3; Attendance Committee 1; Fashion
 Club 3,4.



DAVID MILLER

"Dave"

College

His deep sophisticated voice . . .
 great dresser . . . model trains . . .
 just loves math with Mr. VanLieu.

Tartan Staff 4; Jr. Red Cross 1; Calculus Club 3.



DORIS MILLS

"Dorie"

Nurse

Beautiful blue eyes . . . personality
 plus . . . loves to have a good time.

Tartan 4; Office Assistant 3.

JANE-ELLEN MILORD

"Jane-Ellen"

College

Eighty-three books a summer . . .
 long brown hair . . . one of the folk-
 singing enthusiasts . . . all those A's.

I.R.C. 4; Tartan Staff 3; Tartan Editorial Board 4; French Club 4; Debate Club 4; Medical Assistant 4.





STEWART MITCHELL

"Stewie" **Business**

A good natured fellow . . . quiet, never loses his temper . . . love of joke songs . . . The King . . . color combinations . . . Sons of Canada.

Citizenship Club 2; Band 1-4.

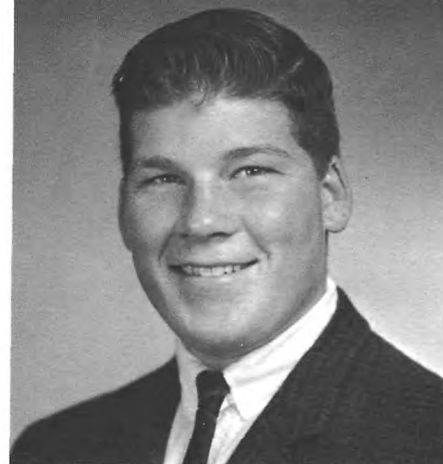


MICHELE MONETTI

"Michele" **Beautician**

Modern Living 5th period . . . always pleasant . . . fun-loving.

Entered in '63; Office Assistant 3,4.



RICHARD MOORE

"Rich" **Undecided**

Red hair . . . jovial . . . personality . . . station wagon . . . quips in class. Football 4; Flag Committee 4.



ROBERT MORAN

"Bob" **Conservation Worker**

Nice clothes . . . bright smile . . . '58 steel grey Buick . . . his quiet manner.

Rifle Club 4; Chess Club 4; Cafeteria Comm. 4; Stage Crew 1,3.



CAROL MORSE

"Trixie" **I.B.M. School**

Singing ability . . . a petiteness . . . sense of humor . . . dancing ability.

Fashion Club 3; Library Comm. 1,2; Jr. Red Cross 1; Medical Asst. 1; Office Asst. 1,2; Student Council 2.

DANIEL MORSE

"Danny" **Lawyer**

The way he struts down the halls . . . goatee! . . . friendliness . . . "Got a dime, man?" . . . the 1963 "R" party.

RICHARD NEEFUS

"Knee Fuzz" **Engineer**

Good all around athlete . . . good grades especially in Spanish IV.

Basketball 2,3; Baseball 3,4; Volleyball 3; Soccer 3,4; **Bagpipe** Staff 2; **Bagpipe** Page Editor 3,4.

VALERIE NEWSOME

"Val" **Secretary**

Talkative . . . friendly . . . emotional . . . ready to help others . . . beautiful green eyes.

Library Assistant 3,4; Fashion Club 3; Usherette 4.





SHARON NORTON

"Shari" **Business**
Her hair . . . beautiful clothes . . .
sparkling personality . . . friendliness.
Glee Club 3; Office Assistant 3,4;
Usherette 4.



ALAN NOWICKI

"Alan" **Mixologist**
Famous for his parties . . . his junior
year fan club . . . white shirt and desert
boots . . . typing ability . . . smooth,
suave manner.



PATRICIA O'CONNOR

"Pat" **Medical Secretary**
Petite . . . nice clothes . . . big blue
eyes . . . friendly . . . carefree . . .
thoughts of others.
Swimming 1; Tennis 1; Tartan Staff
4; Modern Dance 1; Office Assistant
1-4; Usherette 4; Future Nurses Club 2;
Fashion Club 3.



PATRICIA O'DONNELL

"Pat" **Medical Secretary**
Blond hair and blue eyes . . . always
ready to lend a helping hand . . . cheer-
ful and lively . . . friendly.
Basketball 1-4; Glee Club 3; Modern
Dance 1-3; Medical Assistant 4; Usher-
ette 4; Tartan Staff 4.

CLASS OF 1964



JUDITH ORLANDO

"Judi" **Secretary**
Dancing ability . . . style of clothes
. . . her walk . . . dress . . . perky per-
sonality.
Assembly Comm. 3,4; Office Ass't. 4;
Usherettes 4; Student Council 1-4; Class
Secretary 4; Canteen Board 4; Pep Club
4; Citizenship Club 2.

LAWRENCE PASTUSZAK

"Larry" **Teacher**
Friendly . . . industrious . . . trust-
worthy . . . responsible . . . meals on
wheels.
I.R.C. 3; Spanish Club 3; Flag Com-
mittee 4; Jr. Red Cross 1; Student
Council 3; Glee Club 1-3.

LYNDA PATERSON

"Lynda" **Private Secretary**
Quiet . . . intelligent . . . cute . . .
wonderful smile . . . pretty brown eyes
. . . pleasant disposition . . . church
activities.
Modern Dance 1.

PATRICIA PHALEN

"Pat" **Secretary**
Her crystal beads . . . collector of
P.A.D. money . . . sweet addition to
Scott . . . entered from Irvington High.
Entered in 1963; Library Assistant 4;
Usherette 4.





ROBERT PFUEL

"Bob"

College

Artistic talent . . . "floob" . . . soft convincing voice . . . grunion fishing . . . a Jaguar someday?

Band 3; Office Assistant 3; Rock Club 4.



SALLY POOLE

"Sally"

College

Willingness to help . . . jovial . . . her Spanish agility . . . her brown eyes.

Entered 1962. I.R.C. 3; Tartan Ed. Bd. 4; Spanish Club 4; Medical Ass't. 4; Assembly Committee 3,4.



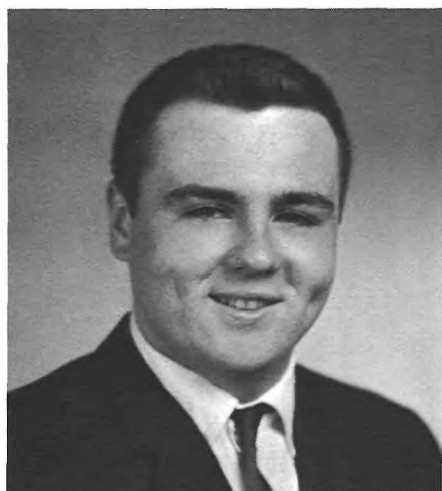
HELENE PRITCHARD

"Gabby"

Nurse

Vivacious . . . always laughing . . . athletic . . . blondie.

Hockey 3,4; Tennis 1; Volleyball 1,3; Modern Dance 1; Office Assistant 3,4; Drill Team 2,3.



BURTON REEVE

"Burt"

Teacher

Hard worker . . . jovial . . . red hair . . . pleasant personality . . . soccer fullback.

Soccer 3,4; Stage Crew 2,4.



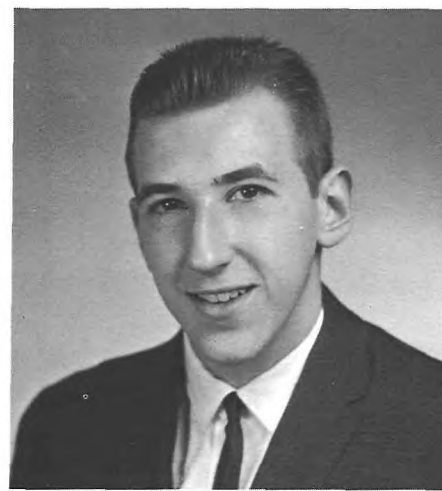
ARLEEN REITMAN

"Arlene"

Psychology

Her long hair . . . beautiful jewelry . . . friendly smile . . . summers spent at Miami Beach . . . friends in Philadelphia.

Office Assistant 2; Tartan Staff 4.



ROBERT RICE

"Ricey"

Business

Ability to wiggle his ears . . . typing 6th period . . . his clarinet . . . humorous.

Musical Production 1-3; Band 1-3; Cafeteria Committee.

SUZANNE ROBERTS

"Sue"

Teacher

Football queen attendant . . . the pink Chevy . . . her collection of boys' rings.

Basketball 1,4; Swimming 1; Softball 1,3,4; Volleyball 1; Tartan Staff 3,4; Bagpipe Staff 3-4; Modern Dance 1-3; Library Ass't. 1,2,4; Medical Ass't. 4.

THOMAS ROEMER

"Tom"

Engineer

Good natured . . . friendly to all . . . Mayor for a day . . . his two years with Señor Onis.

Hockey 1; Jr. Red Cross 1.

**CLASS
OF
1964**





MICHAEL ROSKELLY

"Mike" College
Football co-captain . . . affable
. . . nonchalant . . . joker.
Basketball 1,2; Baseball 1-4; Foot-
ball 1-3, Co-Captain 4; Flag Comm.
4; Jr. Red Cross 1,2; Class Pres. 2; Stu-
dent Council 1-3; Vice-Pres. 4; Pep
Club 4; Canteen Board 4.



RUTH RYAN

"Ruth" Nurse
Even-tempered . . . extra work . . .
attendance room . . . modern dance
concert.
Tennis 1; Modern Dance 1-3; Library
Assistant 1,2; Office Assistant 3; At-
tendance Committee 2-4.



STEPHEN RYAN

"Peabody" College
Jovial . . . friendly . . . linebacker
and guard . . . lean and rugged . . .
blond . . . Brick Township.
Football 1-4; Stage Crew 1-4; Flag
Comm. 4; Jr. Red Cross 1; Track 1.
Track 1.



THOMAS RYAN

"Tom" College
Acting ability . . . Cadillac . . . Mr.
Director . . . fun-loving.
Dramatic Club 3,4; Student Council
2.



DREW SALISBURY

"Drew" College
The big "D" . . . witty personality
. . . intelligence in Physics . . . black
tee-shirt.
Football 1-4.



JOHN SCALLY

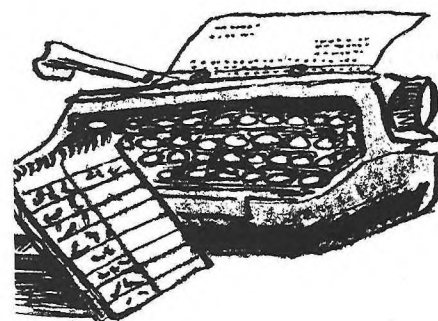
"Les" College
Carefree moments . . . collegiate
hair cut . . . fun-loving . . . more ability
than he lets show.
Glee Club 3.

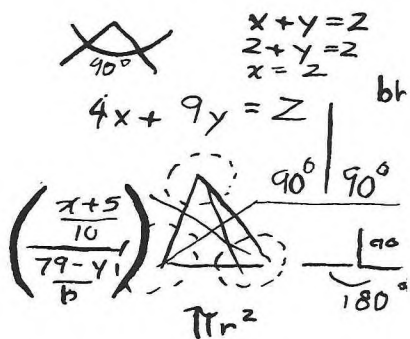
JOHN GARY SCHIEMAN

"Gary" Engineer
"The Himalaya" . . . Red and Grey
Homeroom . . . devotion to Dodger
pitcher Sandy Koufax . . . the "R"
Party.
Cafeteria Committee 2; Flag Com-
mittee 4; Student Council 4.

LAURIE SCHIER

"Laurie" Nurse
Honest . . . sincere . . . fun loving
. . . needs a car to go a block home.
Swimming 1; Hockey 1; Tennis 1;
Volleyball 1; Modern Dance 1-3; Li-
brary Assistant 1,2,4; Jr. Red Cross
2,3; Office Assistant 1-3.





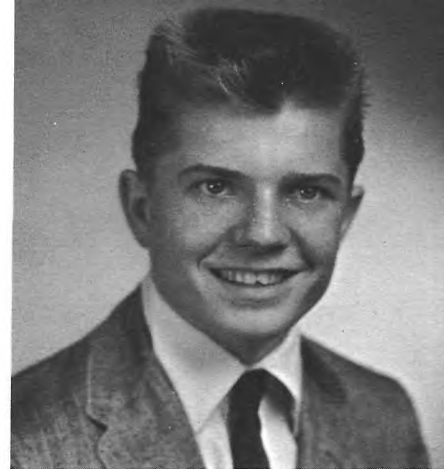
WILLIAM SCHMIDT

"Willy"

Businessman

Curly hair . . . dry sense of humor . . . his other home: Columbian Park . . . his crooked grin.

Student Council 4; Cafeteria Committee 4.



CHARLES SCHWARZ

"Charlie"

College

Fun loving . . . quips . . . English class . . . his quizzical look.



CAROLINE SCIARA

"Carol"

Private Secretary

Quiet . . . soft spoken . . . beautiful dark hair.

Tartan Staff 4.



IRENE G. SCIARRA

"Irene"

Secretary

That silver megaphone . . . petite beauty . . . quietly sincere.

Basketball 1; Modern Dance 1-3; Student Council 1-3; Softball 1; Cheerleader 4.



PENNY SHARP

"Penny"

Teacher

Blond hair . . . blue eyes . . . personality plus . . . easy stride . . . quiet, but fun to be with . . . subtle sense of humor.

Tennis 1; F.N.C. 2; Medical Assistant 3; Usherettes 4.

JAN SHEPARD

"Jan"

Math Teacher

"Morning!" . . . energetic . . . Bach inventions . . . sweat shirt and dungarees . . . hootenannies everywhere.

Basketball 1; Swimming 1; Hockey 1; Volleyball 1; Dance Band 1-4; Tartan Staff 4; Bagpipe Staff 1,2; Bagpipe Page Editor 3; Bagpipe Co-Editor 4; Thistle Staff 2-4; Office Assistant 1; I.R.C. 3,4; Leaders Club 2-4.

KENNETH SHEWITZ

"Ken"

College

Quiet . . . hard worker for Bagpipe . . . nice to know . . . trustworthy . . . warm singing voice.

Tartan Staff 2,3; Bagpipe Staff 1,4; I.R.C. 1-4; Projection Committee 2; Supply Committee 3,4.

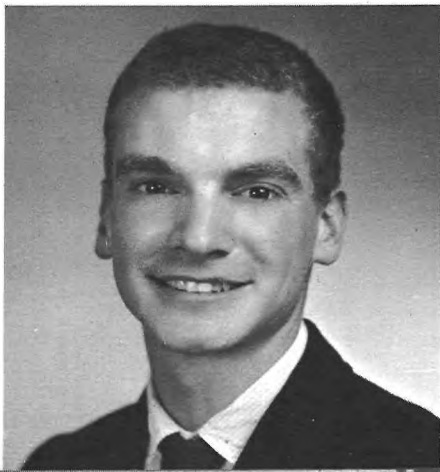
GREGOR SIROTOF

"Greg"

College

His ability in French and music . . . his sudden bursts of laughter . . . nice to be with.

Bagpipe Staff 4; French Club 1-4; Calculus Club 3,4.





ALAN SPONZILLI

"Sponze" Teacher
Never critical . . . always sincere
. . . fine dresser.
Dramatic Club 4; Flag Committee 4;
Office Assistant 1-4; Supply Committee
1-4; Glee Club 3,4.



DOLORES TOMASETTI

"Dee" Beautician
Dancing ability . . . "big brown
eyes" . . . bouffant hair styles . . .
friendly personality.
Glee Club 2,3; Tartan Staff 4; Medi-
cal Assistant 2; Office Assistant 3; Citi-
zenship Club 2.

CLASS OF 1964



NANCY STACKHOUSE

"Nancy" Business School
Friendly way . . . singing ability
. . . little bit of mischief . . . lots of fun.
Basketball 1-3; Volleyball 1,2; Lead-
ers Club 3; Modern Dance 1; Cafeteria
Patrol 3.

MARGARET SUGAR

"Maggie" College
Lovely ash blonde hair . . . piano
. . . self-taught guitar . . . soft spoken
. . . beautiful blush.
Basketball 1; Swimming 1; Tennis
1; Volleyball 1; Glee Club 1,3,4;
Charm Chorus 3,4; Tartan Staff 3;
Tartan Editorial Board 4; Dramatic
Club 2-4; Reception Committee 2;
F.N.C. 1,2; I.R.C. 3,4; French Club 1,3;
Calculus Club 3,4.

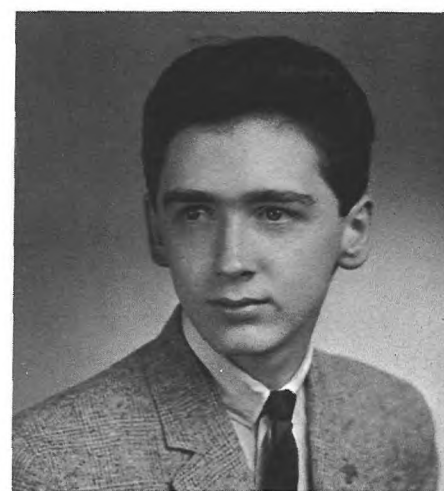


BEVERLY SPICER

"Bev" Teacher
Busy as a beaver . . . hearty laugh
. . . witty . . . good dancing partner
. . . long blond hair.
Basketball 1-4; Hockey 1-4; Tennis
4; Volleyball 1-4; Softball 1-4; Glee
Club 1,2; Tartan Staff 4; Audio Crew
3; Student Council 2,4; Reception Com-
mittee 4; Usherette 4; I.R.C. 3,4; Lead-
ers Club 3; Spanish Club 3,4; Future
Physicians Club 3,4; Highland Players
3,4.

BARBARA TERREGINO

"Barb" Typist
Her cheerful "hi's" in the halls . . .
carefree walk . . . her laugh . . .
many visits to New York.
Pep Club 4.

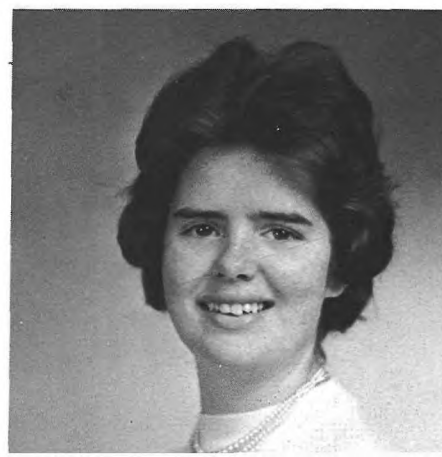


JOHN JOSEPH SULLIVAN

"Silky" College
Reserved . . . grew 2½ inches over
the summer . . . Shop-Rite . . . trips to
Denville.
Bagpipe Staff 1; Audio Crew 1-4;
Supply Committee 1-4; Student Coun-
cil 4.

CAROL ROSE TOMPKINS

"Carol" Dental Assistant
Quiet . . . considerate of others . . .
freckles . . . sweet disposition.
Basketball 1; Glee Club 4; Modern
Dance 1; Citizenship Club 2; Office
Ass't. 4; Usherette 4; Fashion Club 3.





WALTER TURNER

"Walt" College
Very athletic . . . easy to get along with . . . hard worker . . . his "409."

Basketball 1-4; Track 1-4; Soccer 3, 4; Dramatics 1.



WILLIAM VAN TASSEL

"Bill" Draftsman
"Baaad!" . . . outgoing personality . . . enthusiastic sports fan.

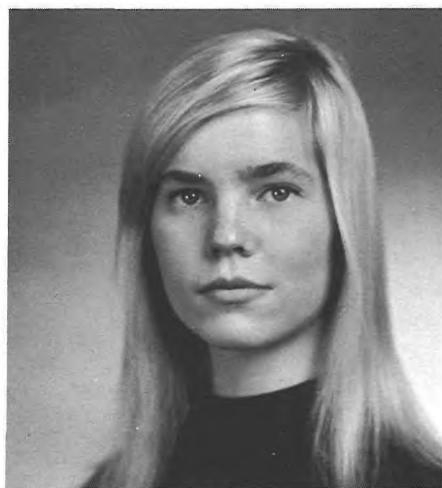
Baseball 3; I.R.C. 3; Assemble Committee 3; Spanish Club 3; Tartan Staff 3; Tartan Ed. Bd. 4; Bagpipe Staff 3; Devot. Ex. Comm. 4; Canteen Bd. 4; Student Council 1-4; Pep Club 4.



LINDA VENEZIANO

"Sneezie" IBM Operator
Hair styles . . . sewing ability . . . make-up committee for Modern Dance Concert . . . always ready to help.

Basketball 1; Hockey 1; Tartan Staff 4; Office Ass't. 1; Usherette 4; Student Council 4.



MARGARET VIKNER

"Peggy" Actress
Acting ability . . . Eileen's big sister . . . modern dance . . . long golden hair.

Tennis 1,2; Dramatic Club 1-4; Bagpipe Staff 1-3; Modern Dance 1-4; Reception Comm. 3; Office Assistant 2; Student Council Executive Board 4.



DIANE WALKER

"Di" Secretary
All around personality . . . many friends . . . her station wagon adventures . . . full of fun.

Modern Dance 2; Citizenship Club 2.

CLASS OF 1964

PAMELA WARNER

"Pammie" Secretarial Work
Her many friends . . . cute smile . . . pretty eyes . . . flirtatious personality . . . Grandmother's shoes.

Basketball 2; Glee Club 1-3; Modern Dance 1,3; Library Assistant 1-4; Office Assistant 2-4; Citizenship 2.

ROBERT WASNER

"Bob" Legitimate Theater
Extrovert . . . Mark Anthony . . . hilarious acting . . . persuasive friendliness . . . weekends with Herbie and the guys.

Football 1-4; Track 1; Dramatics 1-3; Stage Crew 1,2; Chairman 3,4; Modern Dance 3; Flag Comm. 4; Office Asst. 1-4; Student Council 1,2,4.

MARY WEAVER

"Mary" Business School
Lots of fun . . . friendly . . . nice clothes . . . Mr. Sloan's class in freshman and junior years.

Basketball 1,2; Hockey 1,2; Softball 1,2; Volleyball 1,2; Modern Dance 1-3; Glee Club 1; Jr. Red Cross 2.





RUSSELL WESTER

"Rus" Electronic technician
Curly hair . . . private jokes . . .
love for P.A.D. . . . always has some-
thing to say.
Visual Aids 3,4.



DIANE WHARTON

"Diane" Secretary
Her funny laugh . . . always on the
go . . . curly brown hair . . . pretty
clothes . . . sparkling personality.
Fashion Club 3; Modern Dance 1-3;
Medical Ass't. 4; Usherettes 4.



SHARON WILKINS

"Sharon" Nursing
Blue eyes . . . always laughing . . .
summers at Long Beach Island . . .
willing to help others.
Softball 2; Glee Club 3; F.N.C. 1,2,
4; Citizenship Club 1; Library Assistant
3; Medical Assistant 1,2; Student Coun-
cil 4; I.R.C. 3.



ARNO WOZNICKI

"Woz" College
Skill at the piano . . . curly hair . . .
quiet manner . . . Council for Junior
Red Cross.
Glee Club 1-4; Scottsmen 4; As-
tronomy Club 4; Calculus Club 3; Red
Cross Council 3,4; Soccer 3.



GEORGE WUDARSKI

"Big George" Sports
Dangerous when behind wheel of
his Chevy . . . happy-go-lucky . . .
fun-loving . . . a little crazy.

ZONDRA YARVIN

"Z" Undecided
Footprints on Ely Place . . . beauti-
ful blond hair . . . air of grace about
her . . . pearly smile . . . new to Scott.
Entered in 1963; Glee Club 4; Re-
ception Committee 4.

ROBERT YOUNG

"Bob" College
Fun-loving . . . dancing ability . . .
those fishing trips! . . . can be seen
in '38 Ford.
Audio Crew 2; Bagpipe Staff 3;
Cafe. Comm. 2,3; Canteen Board 4.

STEFAN ZUCKER

"Zook" College
Quiet intelligence . . . reserved . . .
drawl (?) . . . occasional bursts of
humor.
Soccer 2-4; Tartan Assistant Editor
3; I.R.C. 3.





DID MOST FOR SCOTT
Susan Domenick, Robert Mechler
Kathy Brodbeck, Stephen Clem



MOST POPULAR
Kathy Brodbeck, Michael Roskelly
Linda Covello, Stephen Clem

SENIOR



CLASS COMEDIANS
Linda Covello, Joe Amirkhas
Gloria Arcaro, Jack DeMado



MOST TALENTED
David Ho, Peggy Vikner
Richard Harding, Linda
Lawrence

BEST ALL AROUND SENIOR
Stephen Clem
Robert Mechler





BEST LOOKING
Stephen Clem, Diane DeMiro
John Gregory (shown), Peg Vikner

BALLOT

MOST ATHLETIC
Leslie Brown, Beverly Spicer
Jack Clarke, Lisette Harris



BEST DRESSED
Robert Flaherty, Susan Domenick
Robert Mechler, Linda Covello

MOST INTELLIGENT
Karin Abbey, Stephen Clem
Gloria Arcaro, Robert
Flaherty (shown)



MOST RESERVED
Stefan Zucker, Darien Liang
Bruce Hoppe, Barbara Keyser

MOST LIKELY TO SUCCEED
Karin Abbey, Stephen Clem
Jan Shepard, Robert Flaherty



CLASS HISTORY

1960-1961

New Teachers: Mrs. Kelly, Mr. Sloan, Mr. Downie, Mr. Hutchings, Mr. Chenoweth, Mr. Hooper.

October 7, 1960: **Pep Rally** Queen — Betsie Underhill, Attendants — Arlene Loffredo and Joanne Cavigliano.

October 7, 1960: **Freshman Party** Entertainment — Student Council, Place — Cafeteria.

November 22, 1960: **Pigskin Hop**.

December 22, 1960: **Christmas Concert** Messiah.

January 31, 1961: **Freshman Elections** President — Mike Roskelly, Vice-President — Steve Clem, Secretary — Sue Domenick, Treasurer — Bob Flaherty.

March 10, 1961: **Student Council Elections** President — Jim Dyal, Vice-President — Chris Kinum, Secretary — Diane McFall, Treasurer — Ann Stroppa.

May 18, 1961: **Spring Concert** IL Trovatore.

"Oven fresh! Baked while you sleep."





"In order to keep the school grounds beautiful, all trash is carefully collected and disposed of."

1961-1962

New Teachers: Mr. Fortier, Mr. Bobby, Miss Gurnik, Mr. Martino, Mr. Powell, Mr. Majerscak.

September 22, 1961: **Pep Rally** Queen — Pat Ditta, Attendants — Elaine DeMiro and Judy Schmidt.

November 3, 1961: **Sophomore Dance** Theme — Magic Moon, Queen — Linda Covello, Attendant — Peggy Vikner.

December 21, 1961: **Christmas Concert** Messiah.

March 2 & 3, 1962: **School Play** — "My Sister Eileen," Class Players — Peggy Vikner, John McBride, Bob Wasner, Richard Harding, Laurie Schier, Robert Pfuelb, John Cammaratta, Joe Amirikhas.

March 9, 1962: **Student Council Elections** President — Mike DeMiro, Vice-President — John Tafaro, Secretary — Beverly Lynn, Treasurer — Jimmy Nicosia.

March 28, 1962: **Sophomore Elections** President — Steve Clem, Vice-President — Bob Flaherty, Secretary — Janet Bellomo, Treasurer — Betsey Eismeier.

May 18, 1962: **Spring Concert** La Traviata.

". . . and this was captured in the deserts of the Middle East."



Now that you know your horn works, try your lights.

"Let a smile be your umbrella."



"Darling, I love you!"



1962-1963

New Teachers: Mr. Dorne, Mrs. Marx, Miss Kroll, Miss Marinaccio, Mr. Wagman, Mr. Hartley.

September 21, 1962: **Pep Rally** Queen — Judi Neis, Attendants — Karen Palmer and Elaine Moran.

November 3, 1962: **School Play** — "My Three Angels" Class Players — Tom Ryan, Joe Amirikhas, Richard Harding, Bob Wasner.

November 21, 1962: **Pigskin Hop**.

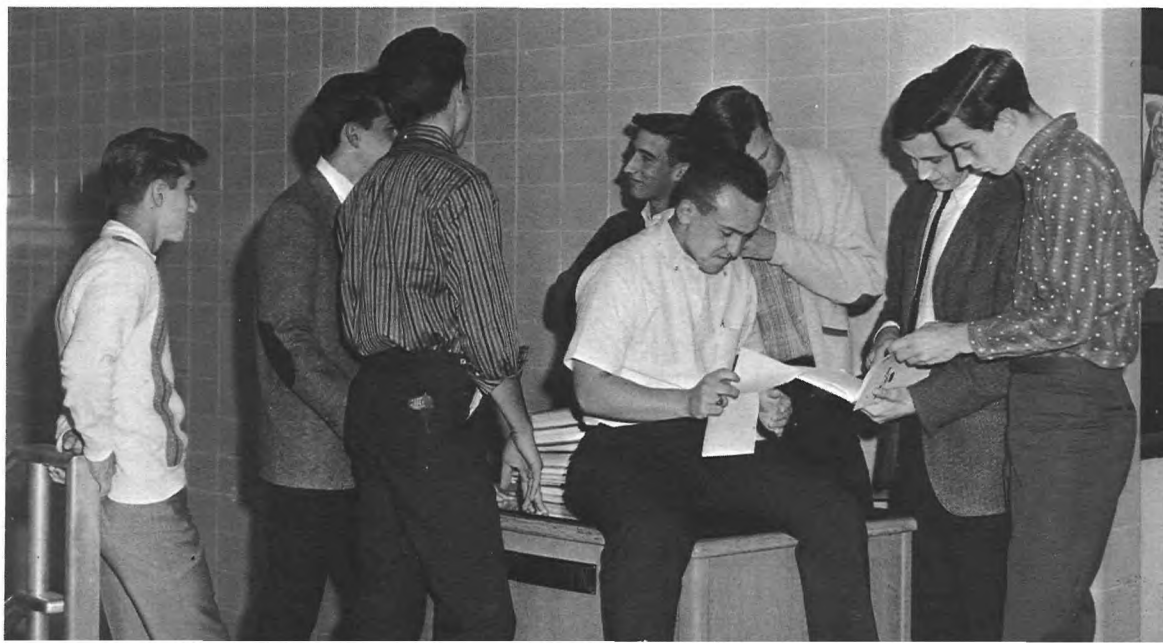
December 20, 1962: **Christmas Concert** Messiah.

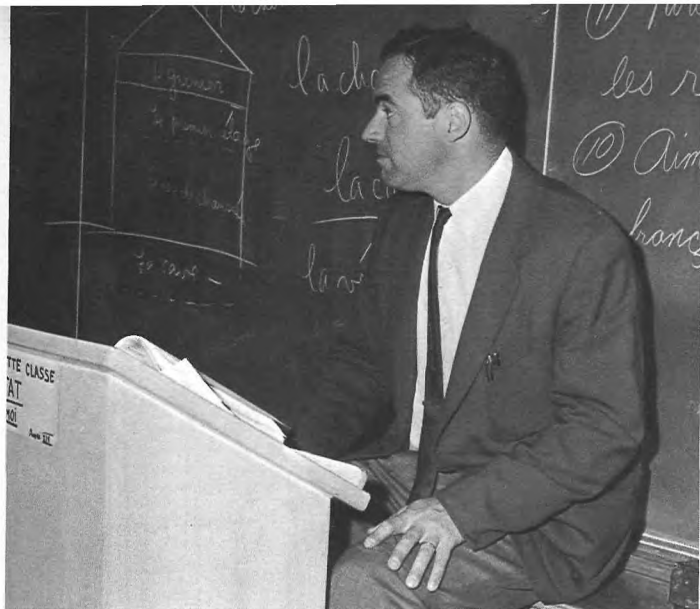
March 8, 1963: **Student Council Elections** President — Robert Mechler, Vice-President — Mike Roskelly, Secretary — Sue Domenick, Treasurer — Bob Flaherty.

March 27, 1963: **Junior Elections** President — Steve Clem, Vice-President — Jack DeMado, Secretary — Judy Orlando, Treasurer — Lester Kaplan.

May 24, 1963: **Spring Concert** The Barber of Seville.

". . . and various committees meet to make important decisions. Ah, to have such minds at the Geneva Conference."





"DeGaulle! Where's he from?"

1963-1964

New Teachers: Miss Sellitto, Mrs. Smith, Mr. Kulaga, Mr. Touchet, Mr. Perlmutter.

September 27, 1963: **Pep Rally** Queen — Sue Domenick, Attendants — Suzanne Roberts and Janet Bellomo.

November 27, 1963: **Pigskin Hop** Entertainment — The Timbermen.

December 20, 1963: **Christmas Concert** *Messiah*.

February 1, 1964: **School Play** — "Arsenic and Old Lace" Class Players — John McBride, Joe Amirikhas.

May 22, 1964: **Spring Concert** *La Boheme*.

June 11, 1964: **Senior Day**.

June 12, 1964: **Senior Prom**.

June 19, 1964: **COMMENCEMENT**.



"Oh, Santa remembered me!"

Despite minor differences, student-teacher relations are kept on a friendly basis . . . usually.





UNDERCLASSMEN

For us, the underclassmen, there stretch ahead many "corridors of light" to pass through in one time at Scott. The corridors seem long, and the days seem unending; but along these corridors are people we have yet to meet, books we have yet to read, experiences we have yet to share, and ideas we have yet to encounter . . . We, too, go forward.





FRESHMAN BOYS

ROW 1: E. Sponzilli, G. Key, D. Deutsch, J. Maurella, D. Burroughs, S. Hardcastle, R. Haas, M. Lohman, P. McCann, G. Hodgetts, R. Orne; ROW 2: T. Maffucci, L. Matrale, R. Constable, C. Guettel, A. Werell, D. Allen, A. Cicalese, J. Curtis, D. McKay, E. Knous, T. Eismeier, A. Pizzano; ROW 3: T. Roe, E. Sirotof, R. Smith, B. Morse, G. Cabell, P. Ramsey, J. Hess, J. Cerbone, J. Luongo, J. Sanders.



FRESHMAN GIRLS

ROW 1: A. DiBello, C. Rusignuolo, E. Girgeti, S. Rochedieu, S. Baker, E. Blodgett, L. Fischbeck, L. Long, L. Fischbeck, K. West; ROW 2: K. Capriglione, D. Curcione, A. DiTommoso, C. Jarmen, L. Almeida, J. Anderson, V. Narvaez, B. Abbey, E. D'Acunti, J. D'Acunti, J. Gottschalk, P. Devine; ROW 3: P. Ciccone, S. Bowman, A. Sponzilli, M. Overbey, L. Baker, D. Pakenham, S. Doyle, A. Scannelli, L. Scardaville, E. Camisa, R. Ho, M. Williams.

FRESHMAN BOYS

ROW 1: M. Allen, T. Ball, J. Ditta, S. Jacober, H. Marion, B. McCroskery, R. Blandon, E. Quass; ROW 2: R. Klein, H. Tallet, P. Ertell, E. Christopherson, J. McNare, V. Masco, K. Clair, M. Garcia, B. Guthrie; ROW 3: T. Milarski, A. Young, J. Otchy, J. Phelan, R. Morehouse, J. Daly, F. Metro, A. Novellino, V. Rossi.





ROW 1: P. Fineran, I. Klein, J. Kulesa, P. Brookes, E. O'Rourke, L. Register, G. Lowe, J. Thompson, G. Wallmann;
ROW 2: J. Moore, L. Fallon, N. Kurry, C. Papick, S. Craig, S. Smith, B. Russell, J. Lally, S. Cormy, M. Daly, L. Conk-

lin, J. Squire, D. Ritzman; ROW 3: C. Saunders, D. Allen, S. Wilson, S. Killela, G. Barillari, L. DiGaudio, L. Varas, M. Marsh, D. Perily, D. Petrie, S. Chirgotis.



FRESHMAN BOYS

ROW 1: C. de Paul, T. Campolo, E. Deep, D. Savastano, S. Tomasetti, P. Vikner, R. Beardsley, P. Werrell, J. Naturale; ROW 2: C. Vonthron, M. Klein, E. Sprague, R. White, S. Kalenowski, J. Caval-

chire, R. Dowd, R. Robinson, W. George; ROW 3: E. Smeraldo, C. Stevens, R. Orlando, J. Norcia, V. Napoliello, R. Waldman, P. Schwester, J. Voinski.

FRESHMAN GIRLS

ROW 1: S. Liang, D. Capitano, S. McDonough, L. Wilkins, D. Wood, C. Dodd, D. Johnson, N. Hughes, T. Garman, T. Stewart; ROW 2: P. Gilmore, T. Adams, L. Kalhust, L. Powell, C. Weber, L. Steigerwald, N. Miller, K. Gregory, S. Saxer, F.

Monohan, B. Logan, A. Graybush; ROW 3: B. Cheek, T. Brewinston, K. Silva, D. Pelusio, K. Daly, C. DeMiro, J. DeCicco, J. Bennet.

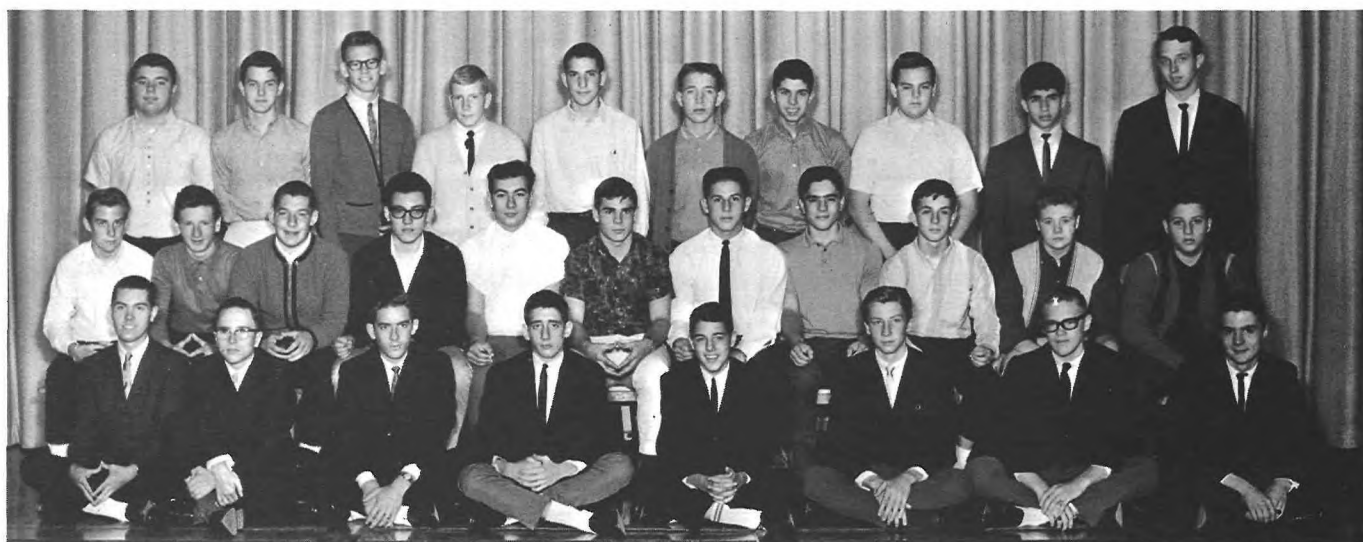




SOPHOMORE GIRLS

ROW 1: M. Higgins, J. Furness, J. Slaymaker, R. Knappe, J. Hopkins, M. Stroppa, D. Wisneski, J. Kautzman, K. Sobol, D. Sanchirico, D. Mines; ROW 2: S. Manning, A. Evangelista, P. Lanza, L. Ventola, R. Manfre, A. Cicinia, P. Cook, B. Blickle, V. Jacobus, J. Szabolcs, M. McCabe, D. Insabella, G. Hummel;

ROW 3: D. Gibson, L. Register, N. Barone, J. McConnell, S. Johnson, O. De Goldsby, F. Johnson, T. Thomas, M. Cheek, G. Hill, A. Monetti, J. Robinson.



SOPHOMORE BOYS

ROW 1: T. Ertel, J. Berkise, C. Meeson, H. Bercowitz, S. Townsley, L. Mortimer, J. Walker, D. Orne; ROW 2: S. Cumberland, J. Anderson, B. Cohen, C. Butera, J. Foglio, R. Straub, M. Almeida, J. Pannucci, J.

Pappadopoulos, A. McCabe, R. De Maio; ROW 3: H. Knabb, P. O'Sullivan, B. Jones, J. Trubenbach, R. Barnett, K. Daly, G. Toscano, P. San Filippo, E. Bio, J. Cameron.

SOPHOMORE GIRLS

ROW 1: G. Iovino, P. Centanni, D. Siegel, A. Hsu, A. Sturges, K. Salmon, S. Smith, E. Sloan, M. Reid, J. Harrison, B. Nicholls; ROW 2: P. Schulte, M. Morrow, N. Chardavoyne, E. Darcy, G. Newsome, P. Biggiani, A. Bamber, A. Pinto, C. Buchel, J.

Edmonson, L. Steel, G. Brown, M. Reeve; ROW 3: J. Williams, E. D'Erasmio, L. Robinson, L. Wasner, J. Russo, G. Zhender, W. Newton, S. Fjellman, C. Matheke, P. Covello, S. Magin, L. Diple, C. Spicer, S. Siegle.





SOPHOMORE BOYS

ROW 1: W. Caulfield, D. Beckman, P. Wendling, R. Ebner, R. Mechler, D. Willet, E. Lindberg, J. Strauss, B. Richards, J. Flaherty; **ROW 2:** R. Arlotta, C. Moore, J. Ryan, R. Ohlson, D. Boggie, W. Dennis, R. Lang, E. Fahey, P. McKinney, P. Ger-

ardo, G. Hunt; **ROW 3:** A. Sturgis, J. Storm, B. Layton, J. Marcantuone, B. Godfrey, T. Brix, D. Bayard, F. Carlson, R. McCarthy, J. Moskowitz, R. Crilley.



SOPHOMORE GIRLS

ROW 1: M. Dysche, B. Dister, J. Harris, B. Steeb, M. Gieson, J. Hoadley, M. Perrone, L. DiTommaso; **ROW 2:** L. Altrath, L. Sprague, J. Haverick, M. Holden, M. Mills, P. Collins, J. Miller, L. Saponara, H.

Piechocki, G. Marshall, E. Russell, K. Van Winckel; **ROW 3:** P. Marone, S. Bodewaldt, P. Russo, J. Anderson, A. Vaccaro, S. Haynes, B. Quass, R. Fanis, V. Kolb.

SOPHOMORE BOYS

ROW 1: P. Schenck, R. Simmons, J. Purcell, A. Person, N. Lardieri, Y. Richards, D. Holey, L. Cusano, J. Roe, D. Behonick; **ROW 2:** E. Weining, R. Bonard, T. Watson, H. Meyer, A. Simone, E. Bluestone, B. Hosch, F. Capezerra, J. Curran, R.

Crocker, B. Maschal, W. Bradshaw, R. Kettle; **ROW 3:** D. Morgan, R. Tanfield, J. Auer, A. D'Palma, R. Hall, R. Filandros, S. Boralsky, J. Vitaliano, J. Burton, R. Workman, J. Perilys, D. Mann, J. Bertoldi, R. Rush.





JUNIOR GIRLS

ROW 1: T. Capitano, N. Nelson, J. Vogel, S. Intile, M. Cusick, J. Palumbo, K. Kenneally, F. Stark, B. McCartney, J. Wilmot, J. Meravi; **ROW 2:** P. Ackert, A. Levine, H. Bocchini, A. Jacober, S. Larsen, C. Ditta, M. Reynolds, J. Rea, A. D'Achino,

F. Allen, P. O'Connell, S. Bonard, V. D'Amato; **ROW 3:** E. Haldeman, B. Znoski, B. Lardieri, L. Luciano, M. Larsen, M. Siculietano, A. Narvaez, R. Rush, K. DeBaun, K. Elliott, S. McKinney, L. Klages, D. Phalen.



JUNIOR BOYS

ROW 1: B. Lawrie, J. Tenney, T. Schlachter, R. Mallamace, S. Bon-scher, C. Rhoads, L. Christopherson, S. Baker, P. McCusker, P. Szabolcs; **ROW 2:** O. Shields, R. Barker, D. Balthaser, P. Hart, D. Ott,

W. Miller, B. Worden, J. Kidd, A. Lemer, G. George, A. Kelshaw; **ROW 3:** T. Taylor, D. St. John, R. Schulte, W. Scheuplein, P. Sugar, T. Houser, S. Picardi, P. Oates, R. Pusey, R. McCusker, J. Kortenhaus.

JUNIOR GIRLS

ROW 1: J. Miller, S. Rush, D. Guthrie, L. Groves, I. Steckroth, E. Windvand, S. Cook, J. Schrank, M. Weber, L. deHagara, L. Miller, J. Pfeiffer; **ROW 2:** L. Kaufman, G. Jamison, K. Allen, M. Popick, A. Pinto, A. Tomasetti, A. Layne, E. Lindsay,

E. Delulio; **ROW 3:** J. Maillard, S. Morse, B. Williams, D. Bryant, J. Thomas, S. Patterson, A. Cabell, R. McGee, M. Basden, C. Ramsey, M. Brooks, S. Pearce, S. Plagge, P. Whitney.





JUNIOR BOYS

ROW 1: B. Thomas, H. Schwarz, L. Hoffman, R. Carr, G. Wojtowicz, J. Schier, D. Collins, R. Curcione, G. Turnberger, J. Agi; ROW 2: L. Riley, M. Armstrong, E. Waldemann, A. Sorice, R. Saunders, R. MacIntosh, M. Caggiano, J. Ciani-

cullo, F. Ciccone, P. Frazzano, J. Crann, E. O'Rourke; ROW 3: J. Menger, W. Gesuelli, B. Edmonson, J. Lockhart, R. Elijah, O. Hopson, F. Ballard, C. Tisdale, A. Dellanno, R. Holt, E. King, C. Albright, E. Phelan, M. Hagan, J. Martin.



JUNIOR GIRLS

ROW 1: B. Skinner, E. Ilgen, J. Stoll, M. Farruggia, T. Maurella, L. Minette, L. Conner, J. Cervasio, L. Smith, J. Stallman; ROW 2: T. Finn, V. Grimm, M. Robinson, D. Drigo, C. Dodds, E. Quinn; ROW 3: B.

Robinson, P. Knowles, L. O'Donnell, G. Clair, J. Anderson, S. Mines, M. Shard, K. Auer, D. DePasque, L. Pandick, L. Dasher, B. Halstead, K. Mooney.

JUNIOR BOYS

ROW 1: R. Spiegel, J. Lindahl, P. Otto, J. Pooler, W. Ponton, J. Rothermel, J. Cummings, J. Rush, P. Hammerslag, P. Stein; ROW 2: C. Simone, D. Adair, J. James, T. Schwester, C. Robinson, C. Korte, N. Pearson, J. McHugh, M. McGill, S. Matheke;

ROW 3: R. McCue, J. Rogers, J. Cortellacci, D. Williams, K. Layne, P. Yeager, W. Newell, J. Jackson, G. Dittler, F. Shaw, D. Ross.





ORGANIZATIONS

If the high school experiences began and ended with scheduled classes, we would certainly feel that we had missed something. Many of the "hours . . . endless and singing" at Scott are spent outside of regular class time, taking part in various activities. Special interest clubs, future career associations, and service organizations — all help to round out our lives and our education. They develop our interests and our sense of responsibility and . . . they're fun.





ROW 1: Mr. Hooper, adviser, K. Brodbeck, L. Lawrence, E. Bankowski, M. Vikner, S. Domenick, R. Mechler; ROW 2: J. Trubenbach, F. Ciccone, S.

Clem, R. Flaherty, G. Schieman, F. Haas, M. Roskelly, D. Ho, G. Hsu.

STUDENT COUNCIL EXECUTIVE BOARD

The Student Council, made up of one representative from each homeroom, has sponsored the Pigskin Hop, the Freshman Dance, a car wash and cake sale, the "R" Party, and a clothing drive. Members of the Executive Board are chosen on the basis of their demonstrated interest in student government.

STUDENT COUNCIL

ROW 1: E. Fahey, A. Werrell, J. Trubenbach, R. Mechler, P. McCusker, A. Kelshaw, E. King, M. Almeida, R. Straub, D. St. John, D. Willett, P. Stein; ROW 2: M. Larson, P. Collins, M. Stroppa, J. Thompson, N. Curry, L. Almeida, K. Sobol, J. Haverick, B. Spicer, E. Bankowski, B. Eismeier, P. Covello, M. Mills; ROW 3: L. Veneziano, M. Vikner, K. Brodbeck, L. Lawrence,

D. Petrie, J. Pfeiffer, J. Martin, S. Borowy, B. Seitzer, J. Orlando, S. Domenick, B. DeLuca, D. DeMiro, K. Kenneally, K. Moody; ROW 4: J. Carr, D. Ho, S. Clem, G. Schieman, G. Hsw, F. Ciccone, M. Roskelly, R. Mechler, F. Haas, R. Flaherty, W. Van Tassel.



I.R.C. EXECUTIVE BOARD

Films, discussions, and debates bring members of the International Relations Club into closer contact with world affairs.



Jan Shepard, Gregory Hsu, Karin Abbey, Jane-Ellen Milord, Owen Gallagher.

The Senior Cabinet, consisting of two members from each P.A.D. class, this year organized and coordinated the activities of Scott's exchange student from Brazil.

SENIOR CABINET

ROW 1: D. Coriddi, D. DeVine, P. Farano; ROW 2: G. Hsu, S. Clem, S. Zucker, D. Ho, R. Mechler, R. Flaherty.





ROW 1: P. Jordan, J. Miller, B. Miller, R. Ebner, R. Bobus; **ROW 2:** B. Worden, K. West, J. Berkise, D. Allen, G. Hunt, P. McKinney, S.

Mitchell, J. DeMado; **ROW 3:** J. Jackson, C. Meeson, E. Blodgett, J., Shepard, J. Storm.

DANCE BAND

The Band provides the instrumental music at pep rallies, football games, and their annual Spring Band Concert. The Dance Band gives interested band members an opportunity to play popular music with a group.

BAND

ROW 1: F. Carlson, J. Strauss, E. Blodgett, L. Fischbeck, L. Fischbeck, D. DeZenzo, J. Vogel, D. Layne. **ROW 2:** P. Jordan, J. Storm, K. Abbey, J. Rothermel, S. Townsley, D. Bayard, F. Roe, R. Constable, T. Cottschalk, L. Long; **ROW 3:** P. Stein, R. Ebner, J. Shepard, J. Pooler, E. Sirotof, B. Abbey, A. Layne, R. Bobus, J. Miller, W. Miller, L. Mortimer; **ROW 4:** J. DeMado,

W. Almeida, P. McKinney, G. Hunt, J. McBride, D. Roberts, J. Berkise, A. Werrel, E. Sponzilli, K. West, D. Capitano, G. Asperschlager; **ROW 5:** R. Simmons, G. Guettel, P. San Filippo, J. Longo, J. Otchy, J. Jackson, C. Meeson, A. Young.





ROW 1: L. Lawrence, J. Kichline, S. Cook, K. Moody; **ROW 2:** J. Furness, S. Plagge, L. Shuttlesworth, M. Higgins, L. Conner, D. Bryant, L. Klages,

M. Stroppa, A. Sturgis, J. Johnson; **ROW 3:** G. Gerardo, B. Windvand, R. Weining, J. Hopkins, S. McKinney, M. Sugar, J. Cervasio, E. D'Erasmio.

CHARM CHORUS

The Charm Chorus and Scottsmen add to the musical variety of the Glee Club performances; the Scottsmen with a combination of good music and laughter; the Charm Chorus with an atmosphere of feminine charm.

SCOTSMEN

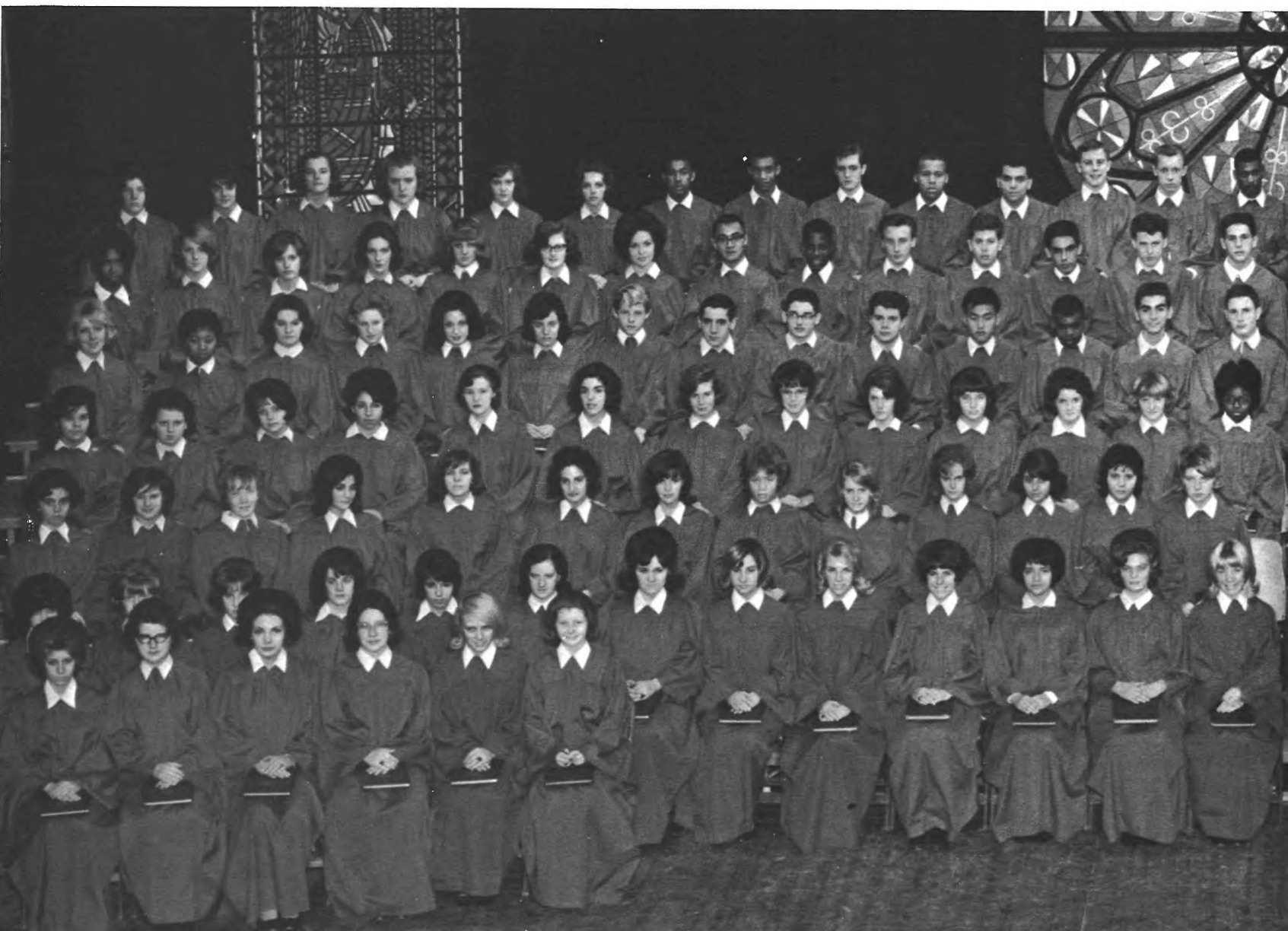
SEATED: D. Ho; **ROW 1:** J. Kidd, P. Yeager, R. McCue, W. Newell, E. Fahey, J. Walker, M. Almeida, C. Butera, R. Johnson, C. Tisdale, H. Bercowitz;

ROW 2: R. Cooke, A. Woznicki, R. Straub, J. James, P. Otto, W. Caulfield, D. Williams, K. Shewitz, D. Mann.





C. Scripps Beebee, Director
Mary Goines, Accompanist

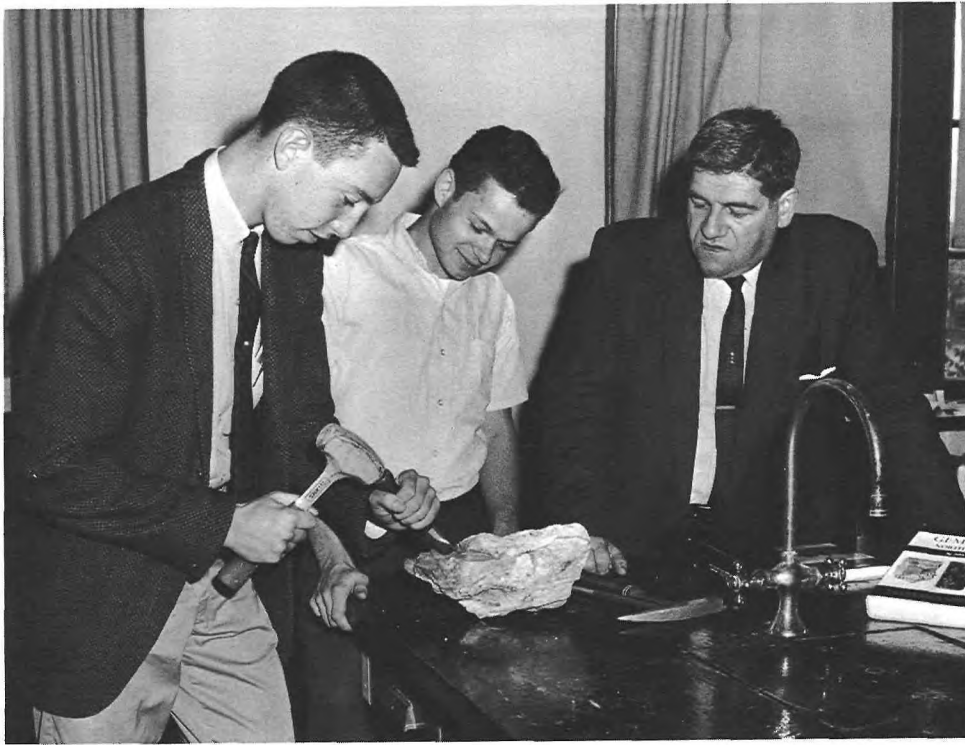




The Glee Club presents two concerts annually. This year's programs were highlighted by Vivaldi's *Gloria*, Handel's *Messiah* and selections from Puccini's *La Boheme*.

GLEE CLUB





Ken Fineran, Bob Pfuelb, Mr. Perkins, adviser.

ROCK CLUB

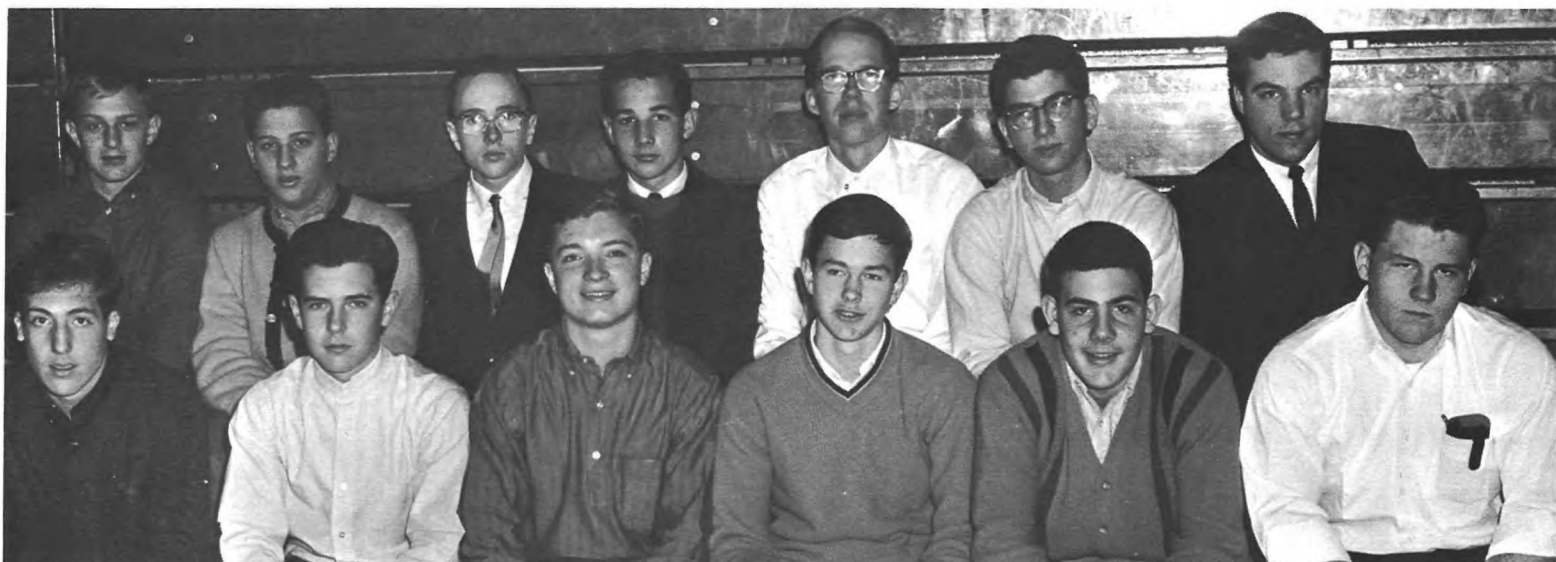
Rock Club members further their knowledge of geology through lab work and field trips.

ASTRONOMY CLUB

The Astronomy Club gives students a chance to learn about and observe heavenly bodies.

ROW 1: Mr. Perkins, adviser; Arno Woznicki, Ken Shewitz, Darien Liang, James Berkise; ROW 2: Steve Clem, Gary Asperschlager, Reginald Cooke.





ROW 1: P. Szabolcs, D. Holey, R. Shulte, P. O'Sullivan, P. Wendling, T. Houser; ROW 2: R. Hosch, R. DeMaio, J. Berkise, R. Ebner, P. Jordan, D. Beckmann, Mr. Hoffman, adviser.

RIFLE CLUB

Members of the Rifle Club meet once a week for films and demonstrations about riflery. The members hope to develop a team for inter-scholastic competition.

BIOLOGY CLUB

The Biology Club conducts various experiments aimed at increasing the members' interest in the biological sciences.

ROW 1: P. O'Sullivan, V. Jacobus, M. Higgins, J. Berkise, M. Stroppa, J. Szabolcs, N. Barone, S. Cumberland; ROW 2: D. Ohlsen, J. Burton, T. Brix, B. Ebner, D. Beckman.





SPANISH CLUB OFFICERS

Gloria Arcaro, Vice-President; Gregory Hsu, President; Linda Bennett, Secretary; Diane DeMiro, Treasurer.

LATIN CLUB

ROW 1: G. Hunt, M. Higgins, R. Lang, F. Capezzeria, R. DeMaio, E. Lindburg. **ROW 2:** A. Pinto, C. Mines, J. McConnell, C. Matheke, J. Kautzmann, J. Furness, M. Red, P. Schulte, R. Hosch, E. Fahey, L. Mortimer.





FRENCH CLUB

FRENCH CLUB OFFICERS

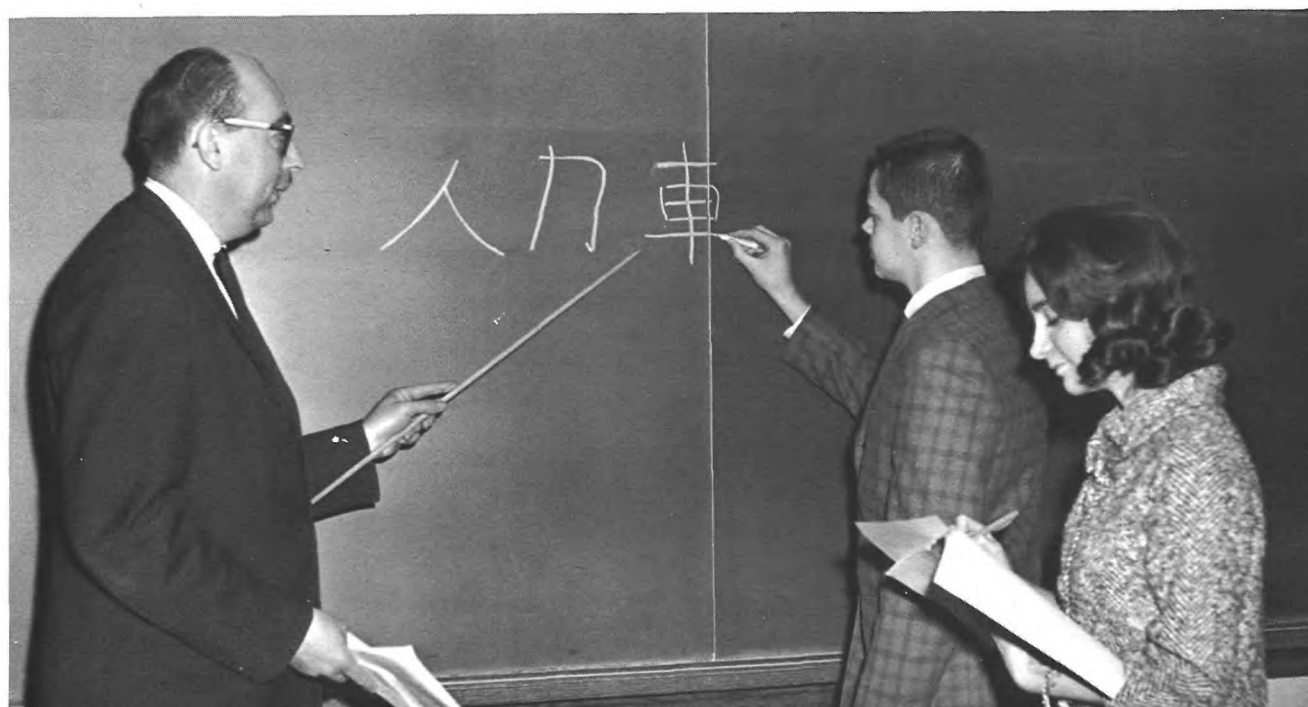
Jack DeMado, vice-president; Susan Plagg, treasurer; Peggy Vkke, secretary; Gregor Sirotof, president.

RUSSIAN CLASS

The French, Latin, and Spanish Clubs help students studying a foreign language to become more familiar with that language through films, lectures, and trips. Chinese and Russian classes, new to Scott this year, give students an opportunity to learn the basic structure of these languages.



CHINESE CLASS





SEATED: Linda Lawrence; **STANDING:** Kathy Brodbeck, Sally Poole; Bob Wasner, Eleanor Bankowski, Mr. Touchet, adviser.

ASSEMBLY COMMITTEE

The Assembly Committee is responsible for planning the many assembly programs put on at Scott.

USHERETTES

The Usherettes, all senior girls, guide people to their seats at the Christmas and Spring Concert.

ROW 1: A. Gomes, J. Martin, D. DeVine, L. Covello, J. Garlick, P. O'Connor, M. Colabelli, T. Durante; **ROW 2:** P. Phalen, J. Kichline, T. Loffredo,

D. Wharton, J. DeBacco, C. Facciponte, C. Lynn, P. Sharp, K. Brennan; **ROW 3:** P. Mercer, D. Meikle, C. Tompkins, S. Norton.





ROW 1: R. Wasner, R. Flaherty, W. Van Tassel, R. Moore, K. Finneran; ROW 2: L. Riley, S. Ryan, L. Pastuszak; ROW 3: A. Sponzilli, F. Ciccone, R. Curcione, J. Jacober, G. Eugene, F. Haas, R. Young.

FLAG COMMITTEE

Members of the Flag Committee act as color guards at all school assemblies.

STAGE CREW

Stage Crew members control the lighting, set up scenery, and operate all stage equipment for all stage productions.

ROW 1: F. Roe, J. Norcia, B. Reeve, J. Bellomo, L. Cusano, P. Vikner; ROW 2: B. McCroskery, R. Blandon, J. McBride, J. Burton, S. Ryan; ROW 3: R. Wasner, P. McCusker, J. Kortenhouse, R. McCusker, B. Spicer, C. Spicer, L. Wasner.



ARSENIC AND OLD LACE

Eugene Sirotof, Carl Von Thron.



CAST

ABBY BREWSTER Sandra McKinney
 REV. DOCTOR HARPER Carter DePaul
 TEDDY BREWSTER Eugene Sirotoff
 OFFICER BROPHY Paul McCusker
 OFFICER KLEIN Edward Sponzilli
 MARTHA BREWSTER Glynnis Clair
 ELAINE HARPER Kathy Mooney
 MORTIMER BREWSTER John Tenney
 MR. HOSKINS Carl Vonthron
 MR. GIBBS John McBride
 JONATHON BREWSTER Bill Caulfield
 DOCTOR EINSTEIN Bill Miller
 MR. SPENALZO Carl Vonthron
 MR. WITHERSPOON Harvey Bercowitz
 LT. ROONEY Richard Moore
 OFFICER O'HARA Joseph Amerikhas

John Tenney, Sandra McKinney, Glynnis Clair, John McBride.





William Caulfield, Eugene Sirotov, William Miller.

HIGHLAND PLAYERS

Scott Thespians sharpen their dramatic skills by directing and acting in the various productions of the Highland Players.

ROW 1: M. Vikner, M. Higgins, C. Spicer, R. Weining, E. Lindsay, A. Pinto; ROW 2: H. Bercowitz, R. Harding, M. Sugar, G. Clair, K. DeBaun, J. Bellomo; ROW 3: F. Brunelle, A. Sponzilli, R. Martin, J. McBride, Mr. Touchet, adviser; ROW 4: J. Burton, R. Wasner, R. McCusker, J. Kortenhous, W. Caulfield.



Sandra McKinney, Glynnis Clair, Harvey Bercowitz.





ROW 1: J. Pannucci, E. Fahey, M. Almeida, D. Willett;
ROW 2: B. Russell, J. Orlando, D. Belle, S. Domenick, B. DeLuca, D. DeMiro, M. Morrow, J. Pfeiffer, I. Sciarra;
ROW 3: V. D'Amato, P. Mercer, B. Seitzer, B. Eismeier, K.

Kenneally, M. Reynolds; **ROW 4:** F. Ciccone, L. Almeida, P. Collins, M. Stroppa, J. Thompson, C. Ditta, E. King, B. Cohen;
ROW 5: R. Mechler, R. Young, R. Mechler, W. VanTassel, G. Eugene, R. Marchitello, R. Flaherty.

The Canteen Board is responsible for planning the weekly dances at the Franklin Library.

CANTEEN BOARD

Functioning solely during the football season, the Pep Club provides posters to help boost student interest and spirit.

PEP CLUB

ROW 1: K. Allen, G. Hsu, B. Benson, J. Amirkas, R. Innes, F. Ciccone, D. Ho, G. Eugene, J. Pfeiffer, L. Wasner; **ROW 2:** P. Covello, V. D'Amato, J. Orlando, S. Borowy, D. Bell, S. Domenick, L. Covello, B. DeLuca, E. Bankowski, J. Martin, J. Garlick, M. Vikner, B. Spicer; **ROW 3:** M. Stroppa, D. Wisneski, D. Meikle, J. Doyle, A. Gomez, C. Facciponte, C. Coriddi, J. Rea, D. DeMiro, B. Eismeier, K. Kenneally, J. Wilmot, M. Reynolds, D. Coriddi, M.

Morrow; **ROW 4:** B. Terrigino, D. Mills, P. Mercer, C. Barker, L. Harris, J. Meravi, L. Luciano, S. Sperling, K. Brodbeck, B. McCartney, L. Lawrence, B. Seitzer; **ROW 5:** R. Mechler, J. Schieman, R. Flaherty, W. VanTassel, F. Haas, B. Wasner, K. Shewitz, B. Hoppe, J. DeMado, G. McCroskery, B. Young.





SITTING ROW 1: B. McCartney, P. Centanni, B. Nicholls; **SITTING ROW 2:** B. Spicer, B. Seitzer; **STANDING:** L. Ventola, J. De Vito,

J. Meravi, E. Stark, D. Guthrie, C. Tompkins, T. Finn, Z. Yarvin, D. Siegel, R. Manfre.

RECEPTION COMMITTEE

Members of the Reception Committee serve as guides for visitors to Scott.

The Fashion Board has two objectives: the encouragement of girls interested in careers in retailing and fashion; and the use of community resources to give the girls practical experience in these fields.

FASHION BOARD

ROW 1: Kathy Brodbeck, Marcia Weber, Linda Lawrence, Peggy Vikner, Pam Pearce, Sue Plagge; **ROW 2:** Penny Sharp, Karen Moody,

Josette Palumbo, Sue Cook, Mrs. Shelly, advisor; Lisette Harris; **ROW 3:** Becky Seitzer, Anita Cabell, Betsy Eismeier, Doreen Guthrie.





SITTING: Ruth Ryan, Theresa Maurella; **STANDING:** Janet Stallman, Doreen Guthrie.

Class Attendance Committee

The Class Attendance Committee checks the attendance slips made out by teachers to insure against students cutting classes.

School Attendance Committee

Members of the School Attendance Committee collect the attendance cards each morning and bring them to the office.

ROW 1: Mrs. Ramey, Adviser, L. Connor, S. Plagge, S. Cook; **ROW 2:** K. Elliot, S. Rush, G. Jamison, B. Halstead, P. Whitney, L. Klages, E. Lindsay.





ROW 1: R. Marchitello, J. Johnson, C. Robinson, J. Cameron, R. De Maio, W. Gesuelli; ROW 2: R. Schmidt, R. Moran, J. Jennings, W. Hellman, R. Knapp, Mr. Howard Tracy, Advisor.

Cafeteria Committee

The Cafeteria Committee cleans and rearranges the cafeteria after lunch periods and social functions.

The Office Assistants work in the office during their study periods doing such things as typing, filing, and acting as messengers.

Senior Office Assistants

ROW 1: A. Alterio, A. Sponzilli, R. Wasner, K. Shewitz; ROW 2: P. O'Connor, L. Lawrence, P. Warner, D. DeVine, A. De Lise, F. Musick, adviser; E. Francke, adviser; ROW 3: F. Ramey, adviser; R. Engler, ad-

viser; A. Carter, E. Bankowski, B. Eismeier; ROW 4: D. Bell, B. De Luca, J. Orlando, P. Mercer, N. Stackhouse, G. Gerardo, H. Pritchard, S. Norton.





CHESS CLUB

ROW 1: J. Cummings; ROW 2: A. Lemer, T. Brix, D. Boggie, D. Roberts; ROW 3: Mr. Chupick, adviser, C. DePaul, E. Sponzilli, R. Constable, J. DiTrollo, J. Burton, G. Hsu.

The Chess Club gives future Bobby Fischers a chance to improve their skill through intra-squad and inter-scholastic competition. This year's club defeated East Orange High School's squad to become city champions.

CALCULUS CLUB

Calculus Club members are interested in furthering their knowledge of higher mathematics.

ROW 1: J. Shepard, D. Liang, M. Sugar, J. DiTrollo; ROW 2: D. Ho, O. Gallagher, G. Hsu, G. Asperschlager, R. Flaherty, K. Shewitz, S. Clem, D. Miller, A. Woznicki.



VISUAL AIDS



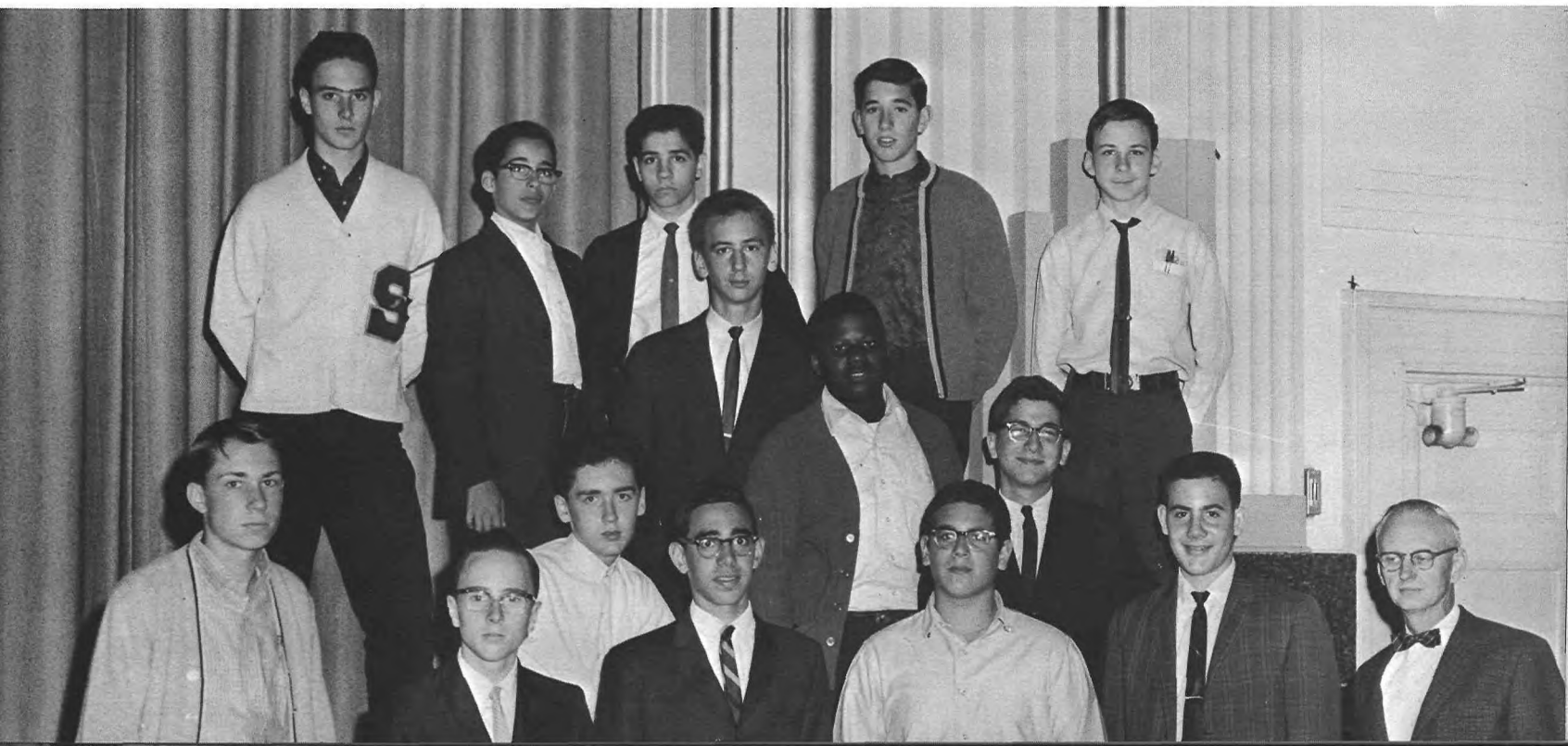
ROW 1: David Boggie, Wally Gesuelli, John McBride, Mr. Dorne, Chairman; **ROW 2:** Thomas Ertel, Tom Brix, Peter Szabolcs.

Members of the Visual Aids Committee set up projectors and show films for teachers.

AUDIO CREW

The Audio Crew is responsible for working the sound equipment in the audio room and on the stage.

ROW 1: J. Rothermel, J. Berkise, J. Strauss, J. Moskowitz, P. Wendling, Mr. Bohsen, advisor; **ROW 2:** J. Sullivan, D. Behonick, R. Elijah, D. Beckman; **ROW 3:** D. Beyerlye, L. Natrale, L. Cusano, P. Sugar, N. Powell.





FUTURE PHYSICIAN CLUB

The Future Physicians and Future Nurses Clubs, give students interested in the medical profession a chance to familiarize themselves with the profession and plan for their careers.

Frank Capezzera, Darien Liang, Lester Kaplan, Beverly Spicer.

FUTURE NURSES CLUB OFFICERS

ROW 1: Beckie Seitzer, Linda Covello; ROW 2: Karen Moody, Linda Conner, Kathleen Allen, Janet Pheiffer.



SENIOR MEDICAL ASSISTANTS

Senior Medical Assistants work with the Nurse, keeping the medical office running smoothly and efficiently.



SEATED: Joanne Doyle; **STANDING:** Linda Covello, Pat O'Donnell, Diane Wharton, Sally Poole, Jane-Ellen Milord.

LIBRARY ASSISTANTS

Library Assistants, working with Miss Kuntz, keep the library running smoothly by checking out and shelving books and supervising study halls.

ROW 1: J. Cameron, E. Sirotof, J. McNair, A. Pearson, J. Saunders; **ROW 2:** K. Daly, S. Morse, D. Wood, S. MacDonough, D. Ritzman, T. Finn, P. Warner, S. Boeman, C. Weber, M. Brooks, D. Phalen; **ROW 3:** P. Phalen,

J. Furness, B. Logan, S. Roberts, P. Brown, E. O'Rourke, M. Dyche, L. Schier, G. Newsom, G. Arcaro, B. Blickle, J. D'Acunti, G. Waldmann, C. Ramsey, V. Grimm.



PHOTOGRAPHY CLUB OFFICERS



John Rothermel, Owen Gallagher, John Tenney, Bill Miller.

Members of the Photography Club work on projects of their own choice with the aid of an adviser when needed.

THISTLE STAFF

The Thistle Staff organizes and edits Scott's literary magazine.

ROW 1: A. Levine, E. Blodgett, G. Arcaro, P. Reed, L. Minette, B. Cagan, M. Popick, K. Allen, J. Meravi; **ROW 2:** V. D'Amato, E. Sloan, C. Spicer, L. Veneziano, Mr. Bobby, adviser; S. Cook, P. Pearce, J. Furness; **ROW 3:**

A. Pinto, S. Borowy, J. Rea, J. Wilmot, K. Kenneally, J. Palumbo, M. Reynolds, H. Bocchini, B. Lardieri, K. Abbey, J. Shepard, J. Slaymaker, D. Beckman.





Mary Ann Siculientano, Barbara Lardieri, Suzanne Roberts, Kenneth Shewitz, Phyllis Brown, Theresa Maurella.

PUBLICATIONS BUSINESS BOARD

The Publications Business Board and Staff collect the money and keep the books for the Bagpipe and Tartan.

PUBLICATIONS BUSINESS STAFF

ROW 1: K. VanWinckle, N. Nelson, J. Haveric, Mrs. Ferrucci, Adviser; **ROW 2:** T. Maurella, A. Layne, B. McCartney, M. Reynolds, J. Rea, S. Roberts; **ROW 3:** M. Siculientano, J. Meravi, B. Lardieri, J. Palumbo, A. Levine, H. Bocchini, S. Matheke, R. Holt.





Stephen Clem
Editor-in-Chief

TARTAN EDITORIAL BOARD

The Tartan Editorial Board and Staff design and put together the school yearbook.



Gloria Arcaro
Managing Editor



Sally Poole
Assistant Editor



Jan Carson
Art Editor



Jack DeMado
Assistant Editor



Gary Asperschlager
Sports Editor



Joel DiTrollo
Assistant Editor



Margaret Sugar
Assistant Editor



William Van Tassel
Assistant Editor



Jane Ellen Milord
Assistant Editor

TARTAN STAFF

ROW 1: L. O'Donnell, P. O'Connor, S. Lippincott, B. Spicer, L. Bennet, D. DeVine; ROW 2: P. Pearce, T. Loffredo, J. Meravi, J. Vogel, N. Nelson, J. Shepard, J. Carson; ROW 3: V. D'Amato, J. Garlick, B. Benson, L. Kaplan, P. Stein, P. Hammerschlag, S. Baker.



BAGPIPE EDITORIAL BOARD

The Bagpipe Editorial Board and Staff collect news and write articles for the school newspaper.



Karin Abbey
Co-editor

NOT PICTURED

News — Gayle Jamison
Editorial — Patricia Whitney
Sandra McKinney
Sports — Peter Yeager
Feature — Susan Plagge

Betty Lou Windvand
Piper — Suzanne Cook
Editorial Assistant — Dennis St. John
Photographers — John Alec Tenney
William Miller



Jan Shepard
Co-editor



Darien Liang
Editorial Assistant



Richard Neefus
Sports Editor



Susan Domenick
Piper Editor



Owen Gallagher
Photographer



Diane Meikle
Head Typist

BAGPIPE STAFF

ROW 1: K. Sobol, M. Higgins, J. Milord, P. Pearce, B. McCartney; ROW 2: V. D'Amato, J. Palumbo, J. Rea, L. Luciano; ROW 3: O. Gallagher, J. Tenny, W. Caulfield, D. St. John, H. Berçowitz, W. Miller, J. DeMado, J. Rothermel, P. Yeager, S. Townsley.

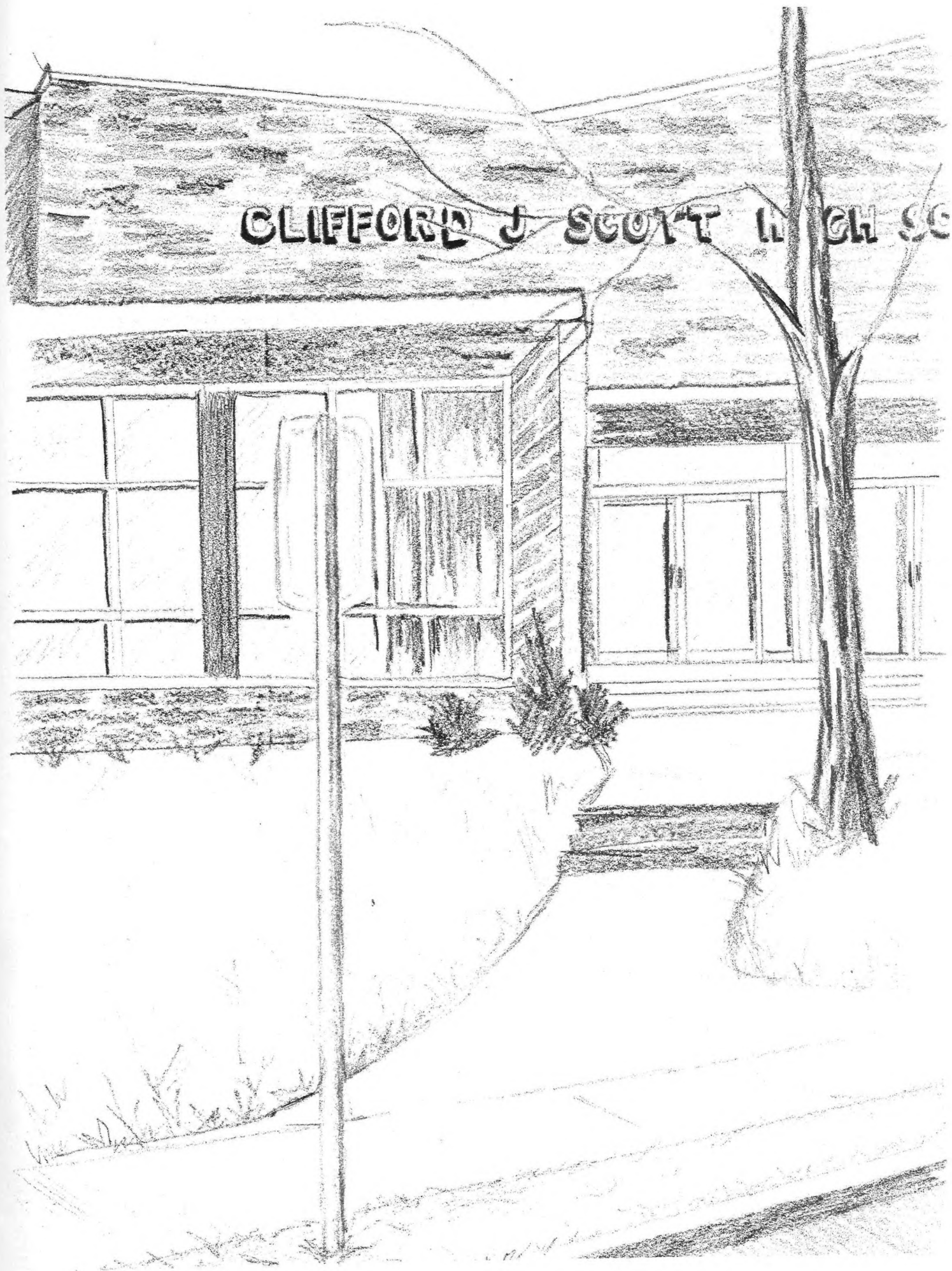




SPORTS

Many of us will remember longer than anything else the great moments from our high school sports. Athletic activities are a vital part of school life for they provide recreation and excitement and help create a unified student body.

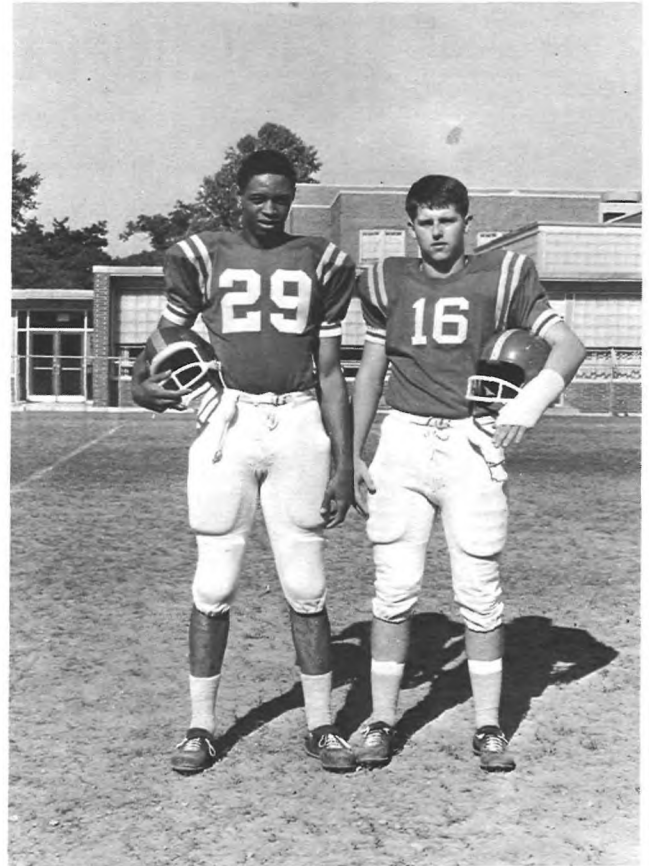
Above all else, sports give young men and women who might not otherwise excel an opportunity to make use of their talents and join the ranks of "those who are truly great."



FOOTBALL

FOOTBALL CO-CAPTAINS
Leslie Brown, Mike Roskelly

The Scotties had a reasonably successful season for a team in a building year. The highlight of the season was Les Brown's two eighty-yard runs against Millburn. Leslie was given honorable mention on the All-County football team. Leslie and Jack Clarke were named to the second team All-Oranges, while Drew Salisbury and Dave Williams were given honorable mention.



ROW 1, left to right: R. Clarke, J. Lockhart, J. Clarke, G. Eugene, S. Ryan, L. Brown, M. Roskelly, J. Jacober, P. Frazzano, D. Salisbury, R. Moore, T. McLaughlin, D. Ross, J. Lindahl, B. Curcione; ROW 2: J. Ryan, F. Ballard, O. Hopson, R. Straub, K. Daly, J. Rogers, B. Godfrey, C. Albright, J. Anderson, J. Trubenbach, L. Turley, M. Almeida, J. Pappodopolous, C. Butera,

R. Barnett, J. Foglio, A. McCabe, C. Robinson; ROW 3: J. McHugh, T. Taylor, S. Matheke, C. Tisdale, B. Schulte, R. Bonard, J. James, J. Flaherty, B. Worden, B. Dennis, R. Lang, H. Knobb, F. Cappazarra, R. Burton, J. Olsen, J. Crann.





Mike Almeida drives for the goal line at the Valley game.

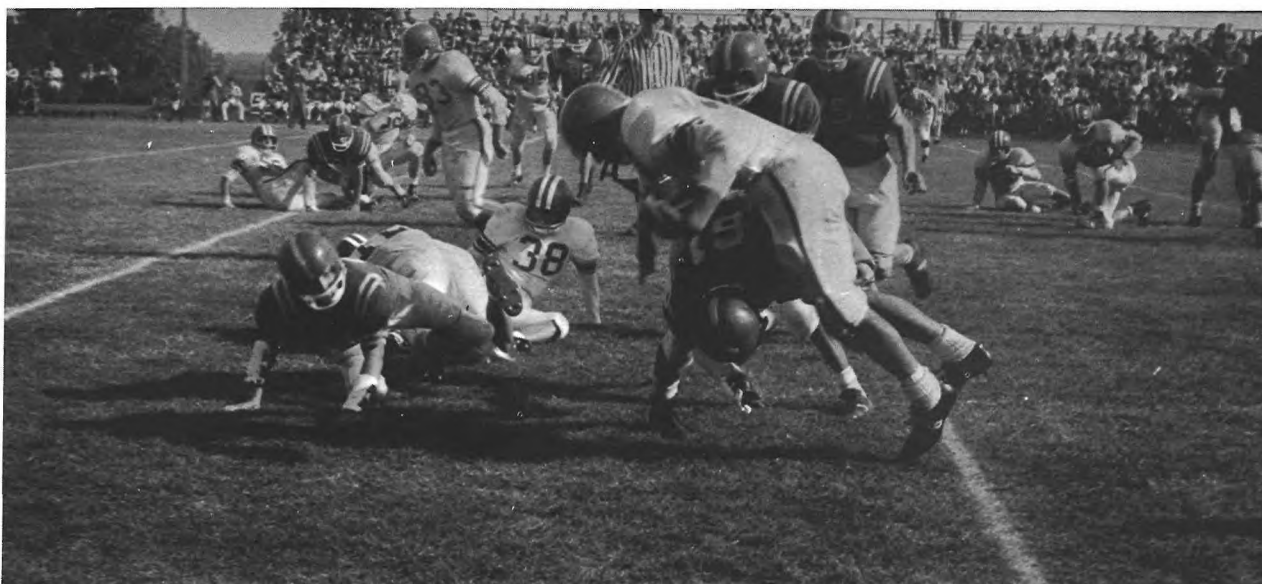
Joe Lockhart takes the ball around the right end.



Football 1963

	Scott	Opp	
7	Morris Hills	13	
6	West Orange	33	
12	Dover	6	
0	Summit	38	
13	Valley	0	
21	Millburn	14	
13	Verona	13	
7	Highland Park	45	

Steve Ryan makes tackle against West Orange.

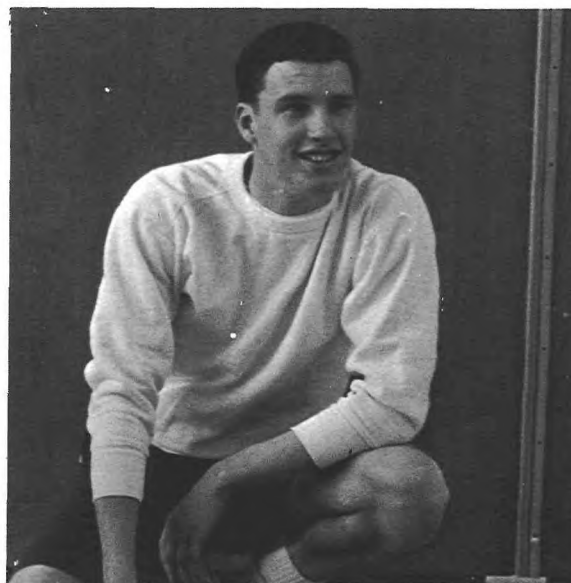


SOCCER

The 1963 soccer team tallied its fourth straight winning season with a fine 7-4-2 record. The high point of the season was the victory over Mountain. Senior Jimmy Lopuchovsky led the season's scoring with 10 goals, a new school record. Senior goalie Fred Haas with six shutouts was named on the second team All-County and honorable mention All-State soccer team.

Soccer 1963

Scott		Opp.
4	Scotch Plains	0
5	Bergen Tech	0
0	Bloomfield	0
2	Clark Regional	3
0	Morris Hills	1
5	St. Aloysius	0
4	Columbia	2
1	South Side	0
2	East Paterson	2
0	Montclair	1
3	Mountain	1
1	St. Aloysius	0
0	East Orange	1



Fred Haas, Goalie.

SOCCER TEAM

ROW 1: P. Hamerslag, D. Holey, P. Yeager, R. Mechler, A. Cicalese, T. Eismeier, C. Guettel, D. Willet, S. Townsley, T. Lindberg, B. Richards; ROW 2: W. Scheuplein, B. Lawrie, D. Ho, J. Lopuchovsky, A. Lemer, F. Haas, R. Flaherty, Y. Richards, R. Holt, A. Guettel, B. Jones, B. Cohen; ROW 3: Mr.

Lyons, varsity coach; S. Tomasetti, C. Korte, B. Reeve, N. Lardieri, B. Hoppe, S. Zucker, J. DeMado, K. Bolen, J. Haverick, R. Neefus, E. Fahey, H. Berkowitz, Mr. Townsley, junior varsity coach.



TENNIS



Bob Lawrie, singles.



Peter Stein, singles.

The Clifford Scott tennis team, having lost key men through graduation, finished the 1963 season quite below expectations. The major load was carried by underclassmen, who lacked the experience necessary for a successful season.

TENNIS TEAM

ROW 1: Steven Baker, Robert Ebner, Paul Sugar, Peter Stein, Robert Lawrie; ROW 2: Coach Elroy DeMaria, John Rothermel, Ronald Bobus, Kenneth Shewitz, John Riley, Henry Meyer.



BASKETBALL

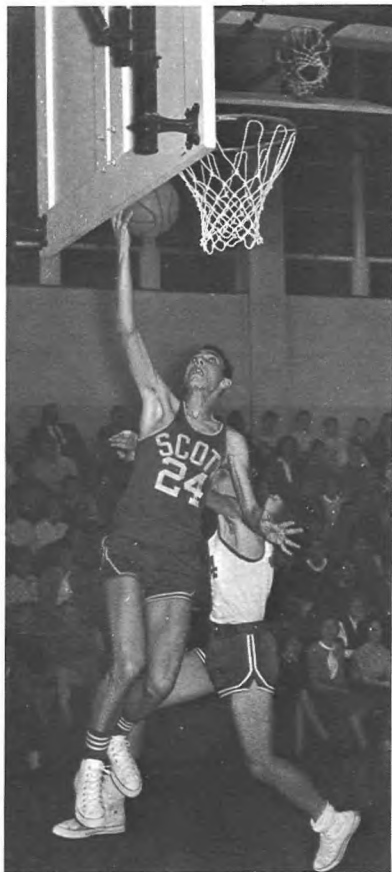
Scott's inexperienced, junior-laden cagers finished the 1963-64 season with an outstanding 19-5 record. Under Coach Ed Lyons, Scott won its third Group II Section II championship in ten years by beating New Providence 66-53. Other high lights of the season were Coach Lyons' 200th victory which came over Immaculate, a four overtime victory over Mountain, and wins over Valley, Roselle Park, and Arts. Tom Schwester led the team in scoring and rebounding and was named to the First team of the Group II All-State Team.



Mike Almeida goes up for a jump shot against Millburn.

ROW 1: Left to right: J. Purcell, manager; T. Schwester, F. Ciccone, B. Holt, M. Almeida, J. Clarke, B. Cohen, manager. ROW 2: Ed Lyons, coach; R. Neefus, C. Korte, A. Sorice, D. Williams, G. Cabell, J. Phalen.





Anthony Sorice scores two points on a lay up.

BASKETBALL 1963-1964

Scott		Opp.
53	Vailsburg	45
59	Stevens Academy	44
71	Newark Tech.	40
48	Mountain	44
63	Millburn	44
54	Morris Hills	51
48	Highland Park	41
59	Roselle Park	44
54	Valley	58
58	Newark Academy	50
55	Immaculate	54
47	East Side	49
72	Garfield	55
48	Harrison	46
83	Valley	64
38	Roselle Park	41
65	Franklin Township	45
50	New Providence	48
72	Verona	50

ESSEX COUNTY TOURNAMENT

44	Central	78
N.J.S.I.A.A. TOURNAMENT		
60	Belvidere	41
61	Arts High	53
66	New Providence	53
55	North Arlington (double overtime)	58

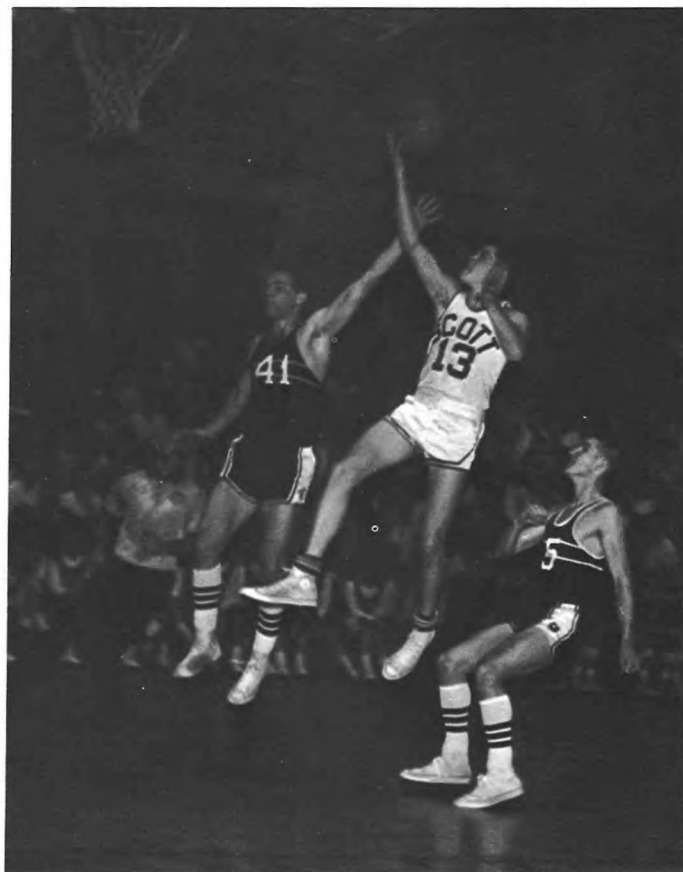


Jack Clarke tries an outside shot against New Providence in the Sectional Finals.

Bob Holt drives in for a shot against New Providence.



Cliff Korte hits for two against New Providence.



TRACK

The 1963 track team had another admirable season as a capable group of athletes achieved a good 6-2 record in dual meet competition. There was one new school record set as Les Brown raised the old high jump mark.

Track 1963		
Scott		Opp.
55	Glen Ridge	62
62	Dover	54
50	Millburn	67
80	Caldwell	36
61	Roselle Park	55
2nd	Tri meet (Livingston- W. Orange)	
83	Verona	34
63	Irvington	54
71	West Orange	46



Co-Captains and Coaches

Chris Plagge, Leslie Brown, Mr. Pollock, Mr. Best.

ROW 1: C. Simone, T. Lindberg, S. Matheke, R. Lang, N. Lardieri, R. Straub, C. Plagge, co-capt.; L. Brown, co-capt.; T. Hauser, J. Trubenbach, D. Holey, P. Yeager, R. Johnson, R. McCarthy; ROW 2: N. Pearson, J. Lindahl, J. Olson, R. Carr, W. Scheuplein, P. Oates, J. Foglio, F. Capezzeria, B. God-

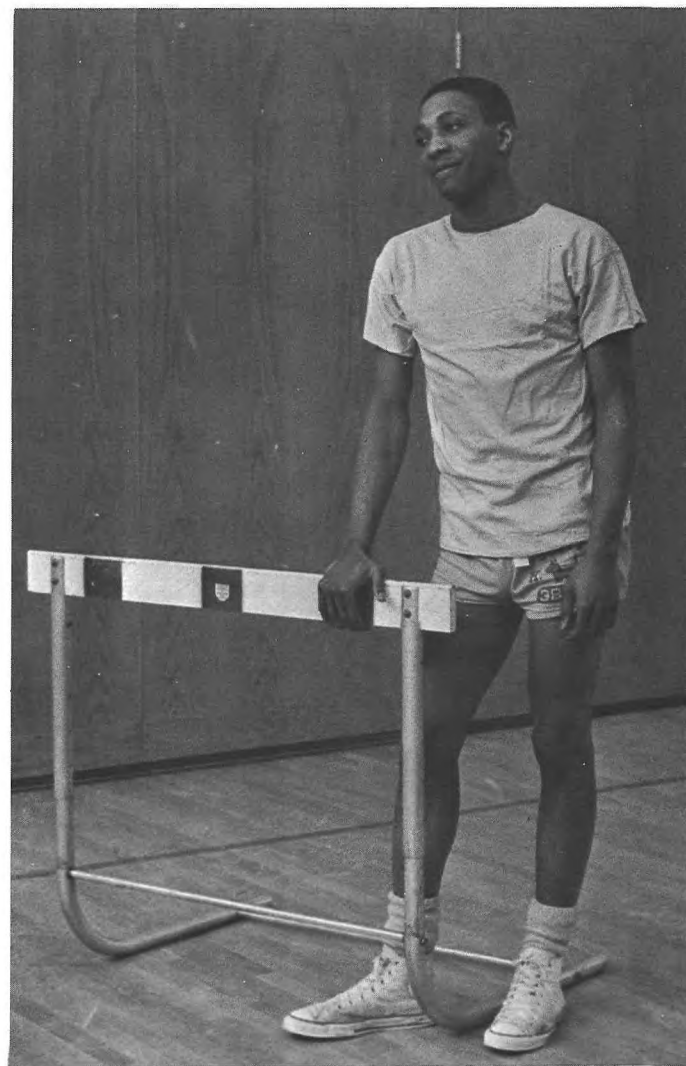
frey, J. McBride, R. Shulte, R. Cooke, R. Clarke, E. Gsell, D. Ross; ROW 3: Mr. Pollock, coach; Mr. Best, coach; B. Worden, D. St. John, W. Miller, D. Beyerle, J. Clark, F. Ballard, J. Lockhart, W. Turner, J. James, J. Tafaro, M. Fahey, J. Haverick.





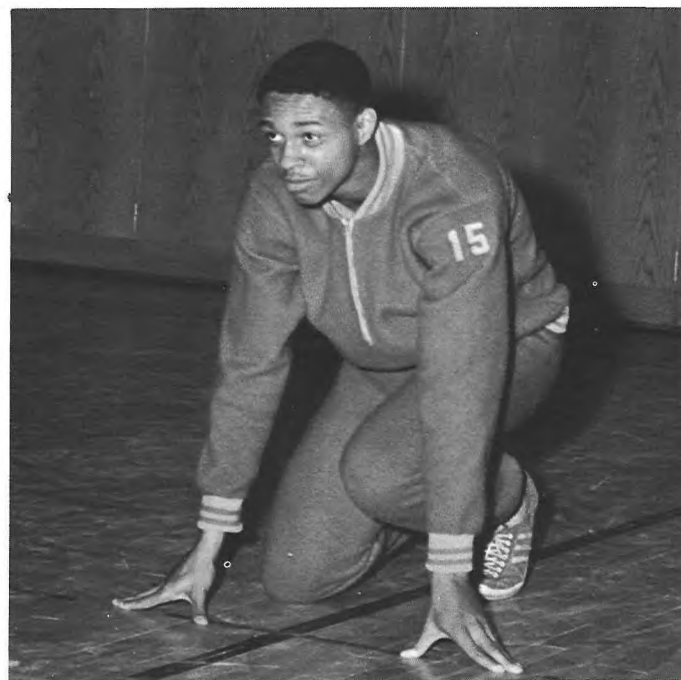
Walter Turner finishing a quarter mile in first place.

Joe Haverick.



Jack Clarke.

Leslie Brown



BASEBALL

Last year's baseball team which was in a building year finished with a respectable record of 6 wins and 8 losses. Some of these victories came over powerful Immaculate, Orange, and West Orange Mountain teams. The season was highlighted by Ricky Neefus' no-hit victory over Orange.



Fred Haas, shortstop.



Mike Roskelly, first base.

BASEBALL TEAM

ROW 1: T. Keating, C. Perine, P. Frazzano, R. O'Keefe, S. Picardi; ROW 2: Mr. Miller, Coach, D. Williams, J. Commarata, M. Roskelly, F. Haas, R. Neefus, R. Flaherty, W. Vantassel, Mgr.





Tom Keating, second base.

BASEBALL

Scott		Opp.
7	Immaculate	6
13	Orange	0
3	Parsippany	8
1	Roselle Park	4
0	Bloomfield	1
11	Mountain	0
0	Immaculate	1
7	Valley	6
1	Roselle	2
2	St. Mary's	8
4	Roselle Park	5
4	Livingston	2
1	Cranford	2
11	Orange	3

Richard Neefus, pitcher.



Bob Flaherty

John Cammarata, catcher.





Marilyn Stroppa, Linda Conner, Kathy Brodbeck, Valerie D'Amato, Lisette Harris, Captain; Sandra Sperling, Judy Wilmot, Suzanne Cook, Irene Sciarra.

CHEERLEADERS



TWIRLERS

KNEELING: Diane DeMiro, Betsy Eismeier, Captain; Linda Covello;
STANDING: Virginia Jacobus, Patricia Schulte, Becky Seitzer, Nancy Nelson, Susan Magin, Janet Pfeiffer.

GIRLS' SPORTS

The after-school girls athletic programs consists of seasonal sports which are held for approximately eight to ten weeks from September through June. These include hockey, soccer, basketball, volley ball, tennis, softball, and badminton. Scott also offers its girls an extensive modern dance program which is available on four levels. The first level is the Freshman Dance group which is open to all freshmen, while the next three groups, Performing, Concert, and Orchesis are competitive. All four groups finish practice in March, ending the year with their annual Spring Concert.

Every year a senior girl is awarded the Jonas W. Swenson Memorial Trophy. Last year's recipient was Kathryn Garlick who received the award because of her sportsmanship and outstanding ability in girls' athletics.



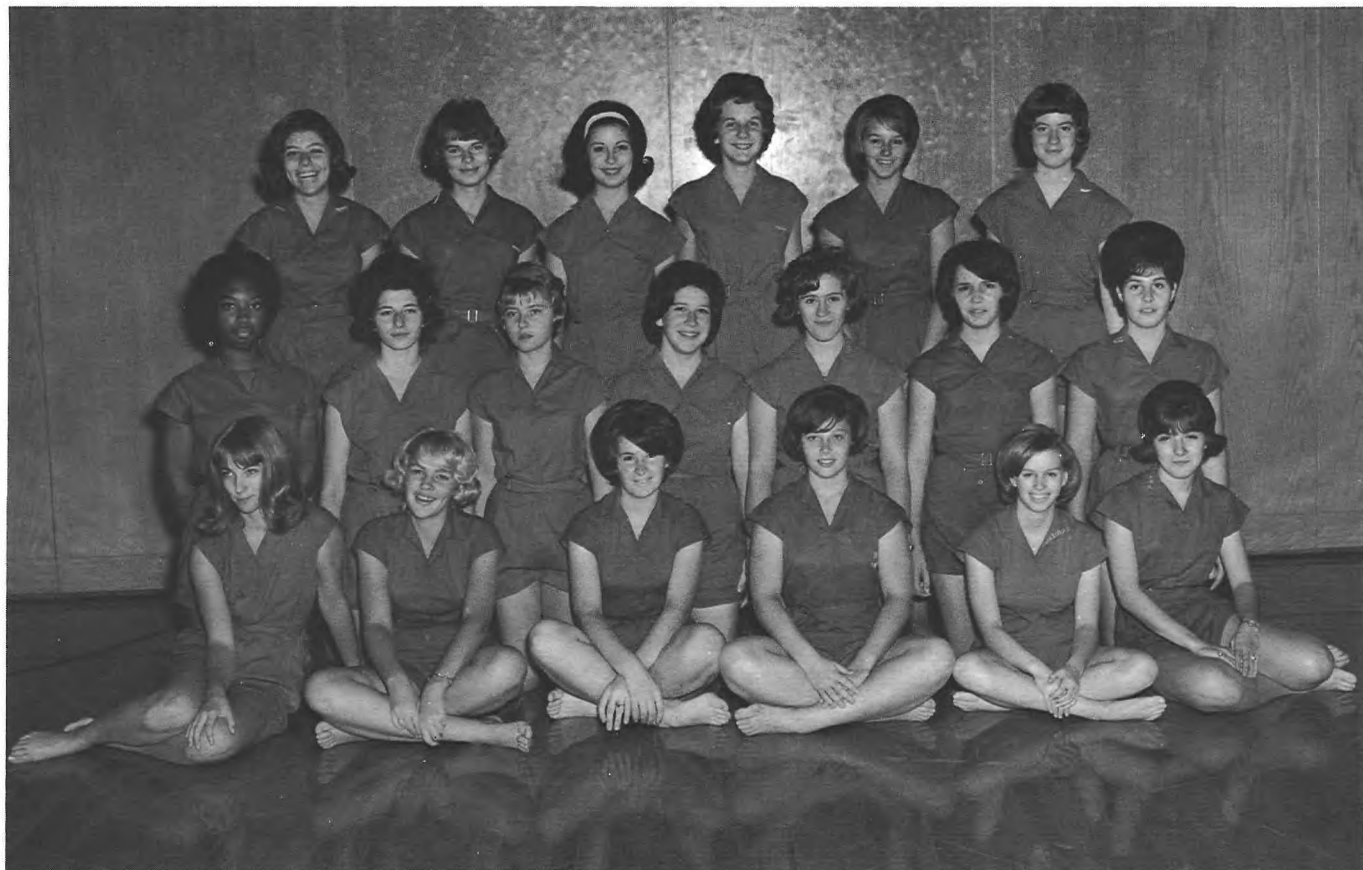
ROW 1: Greta Brown, Genevieve Gerardo, Pat Shulte; ROW 2: Valerie D'Amato, Laurel Wasner, Marilyn Cheek, Caroline Dodds, Linda Ventola.

CONCERT DANCE GROUP

ORCHESIS DANCE GROUP

ROW 1: A. Hsu, S. Magin, J. Martin, S. Jacobis, M. Stroppa; ROW 2: B. Halstead, J. DeBacco, A. Cabell, L. Harris, S. Sperling, M. Viker, E. Derose, S. Patterson.





ROW 1: J. Harrison, C. Hummel, M. McCabe, B. Nicholls, M. Holden, P. Lanza; **ROW 2:** L. Register, N. Barone, A. Piechocki, R. Weining, P. Covello, E. Sloan, A. Evangelista; **ROW 3:** J. Szabolcs, D. Wisneski, L. Groves, D. Guthrie, K. Van Winckel, L. Kauffman.

PERFORMING DANCE GROUP

GIRLS' SOFTBALL TEAM

ROW 1: J. Williams, P. Covello, S. Siegle, E. D'Erasmus, G. Marshall, M. Higgins, D. Driego; **ROW 2:** B. Spice, L. Robinson, B. Nicholls, K. Salmon, C. Hummel, C. Matheke, C. Dodds, E. Roskoski, J. Bellomo.





ROW 1: Elaine Roskoski, Caroline Dodds, Donna Drigo, Emily D'Erasmus. ROW 2: Susan Siegle, Gail Marshall, Cindy Matheke, Pat Covello, Maureen Higgins.

GIRLS' BADMINTON TEAM

GIRLS' HOCKEY

ROW 1: A. Graybush, E. O'Rourke, M. Reeve, G. Lowe, T. Brewington, E. Lindsey, J. Miller; ROW 2: B. Spicer, L. Baker, C. Bachel, J. Meravi, D. Wisneski, M. Higgins, H. Pritchard, L. Kauffman, L. Robinson.



PATRONS

Mr. and Mrs. David Abbey
 Alec
 Gloria Arcaro
 Mr. and Mrs. Asperschlager
 Mr. and Mrs. Victor S. Bankowski
 Mr. and Mrs. Robert J. Barker
 Janet Bellomo
 Mr. and Mrs. A. J. Bellomo
 Mrs. E. Bennett
 Brant Benson
 Harvey Bercowitz
 William F. Best
 David Beyerle
 Helene Bocchini
 Boots
 Kathy Brodbeck
 Mr. and Mrs. E. J. Brodbeck
 Leslie John Brown
 Phyllis Brown
 Mrs. Janet R. Brown
 Camille Capriglione
 Mrs. Louise Clarke
 Steve Clem
 Mr. and Mrs. H. A. Clem
 Linda Conner
 Sue Cook
 Linda Covello
 Valerie D'Amato
 Julie De Bacco
 Mr. and Mrs. De Luca
 Brenda De Luca
 Jack De Mado
 Mr. and Mrs. J. De Mado
 Mr. and Mrs. De Iulio
 Mr. and Mrs. Joseph Di Trolio
 John Ditta
 Mr. and Mrs. Gerald Domenick
 Joanne Doyle
 Robert Ebner
 Betsy Eismeier
 Mr. and Mrs. K. F. Eismeier
 Mrs. Irene Eugene
 Tullia Ferrucci
 Fifi
 Mr. and Mrs. Charles Fineran
 Judge and Mrs. Robert Flaherty
 Mr. and Mrs. Augusto Gomes
 Mr. and Mrs. C. L. Guettel
 Fred Haas
 Pete Hamerslag
 Fred Hill
 Rev. and Mrs. Charles Ho
 Bruce Holden
 Bob Holt
 Mr. and Mrs. J. L. Hoppe
 L. N. Hooper
 Gregory Hsu
 Jim Jackson
 Joe James
 Mr. and Mrs. John Jarka
 Gayle Jamison
 Jacquelyn Johnson
 Janet Kichline
 Michael Tage Klint
 Cliff Korte
 Mr. and Mrs. Milton J. Krueger
 Roland Lawton
 Andrew Lemer
 Alisa D. Levine
 Mr. and Mrs. Tomson Liang

Mr. and Mrs. Melvin Lindahl
 Emmeline A. Linn
 Joe Lockhart
 Miss Marinaccio
 Mr. and Mrs. G. E. Martin
 John Mazzuto
 Mrs. Rose McCartney
 Bruce McCroskery
 Robert McIntosh
 Patrick McKinney
 Tom McLaughlin
 Bob Mechler
 Mr. and Mrs. Irving F. Mechler
 Pat Mercer
 Mr. and Mrs. Philip R. Mercer
 Marilyn Metro
 Mr. and Mrs. Frank Metro
 Bill Miller
 David Miller
 Doris Mills
 Karen Moody
 Michele Monetti
 Mr. and Mrs. Michael Monetti
 Mr. Richard Joseph Moore
 Nancy Nelson
 Josette Palumbo
 Lawrence Pastuszak
 Mr. and Mrs. J. S. Pearce
 Mr. and Mrs. Pfeiffer
 Mr. and Mrs. V. L. Plagge
 Mr. and Mrs. Archie Pollock
 Sally Poole
 Mr. and Mrs. James E. Powell
 Mr. and Mrs. Robert Reid
 Elizabeth B. Richardson
 Dennis Ross
 Tom Ryan
 Mr. and Mrs. J. Ryan
 Steve Ryan
 Samantha
 Mr. and Mrs. Schulte
 Mr. and Mrs. Sidney S. Schupper
 Sandy Schupper
 Mr. and Mrs. Robert Seitzer
 Penny Sharp
 Mr. and Mrs. Robert Shepard
 Mr. and Mrs. David Shewitz
 Mrs. William Smith
 Sandy Sperling
 Mr. and Mrs. Ernest Sponzilli
 Alan Sponzilli
 Karen Sobol
 Pete Stein
 Mr. and Mrs. Julius Stein
 Margaret Sugar
 Paul Sugar
 Douglas Van Lieu
 Bill Van Tassel
 Mr. and Mrs. H. Van Tassel
 Linda Veneziano
 Dr. and Mrs. David L. Vikner
 Jill Vogel
 Mr. and Mrs. R. L. Whitney
 Dave Williams
 Judy Wilmot
 Mr. and Mrs. John A. Windvand
 Mr. and Mrs. E. Wizda
 Mr. and Mrs. Zygmunt Woznicki
 Pete Yeager
 Mr. and Mrs. W. E. Young

EAST ORANGE PUBLIC LIBRARY



3 2665 0024 7083 1

